



PARTS CATALOG

KF9, KG9, MARK 40

SERIAL NUMBER

MARK 40, KG9, KF9 ALL

TABLE OF CONTENTS:

ACCESSORIES	1
CARBURETOR ASSEMBLY	24
CARBURETOR LINKAGE	26
COWLING	6
CRANKSHAFT, PISTON AND CONNECTING ROD	36
CYLINDER BLOCK AND CRANKCASE ASSEMBLY (EXHAUST SIDE)	32
CYLINDER BLOCK AND CRANKCASE ASSEMBLY (INTAKE SIDE)	28
DRIVE SHAFT HOUSING-CLAMP AND SWIVEL BRACKET	38
FLYWHEEL AND AUXILIARY STARTER PLATE	4
FUEL FILTER AND BRACKET	18
FUEL PUMP ASSEMBLY	22
GEAR HOUSING-DRIVE SHAFT AND PROPELLER	42
MAGNETO (EXTERNAL PARTS)	10
MAGNETO (INTERNAL PARTS)	14
PARTS INDEX	46
STARTER ASSEMBLY	2

NOTE: Indented description indicate that these parts are included in preceeding assembly.

AR = As Required

NSS = Not Sold Separate

OPT = Optional

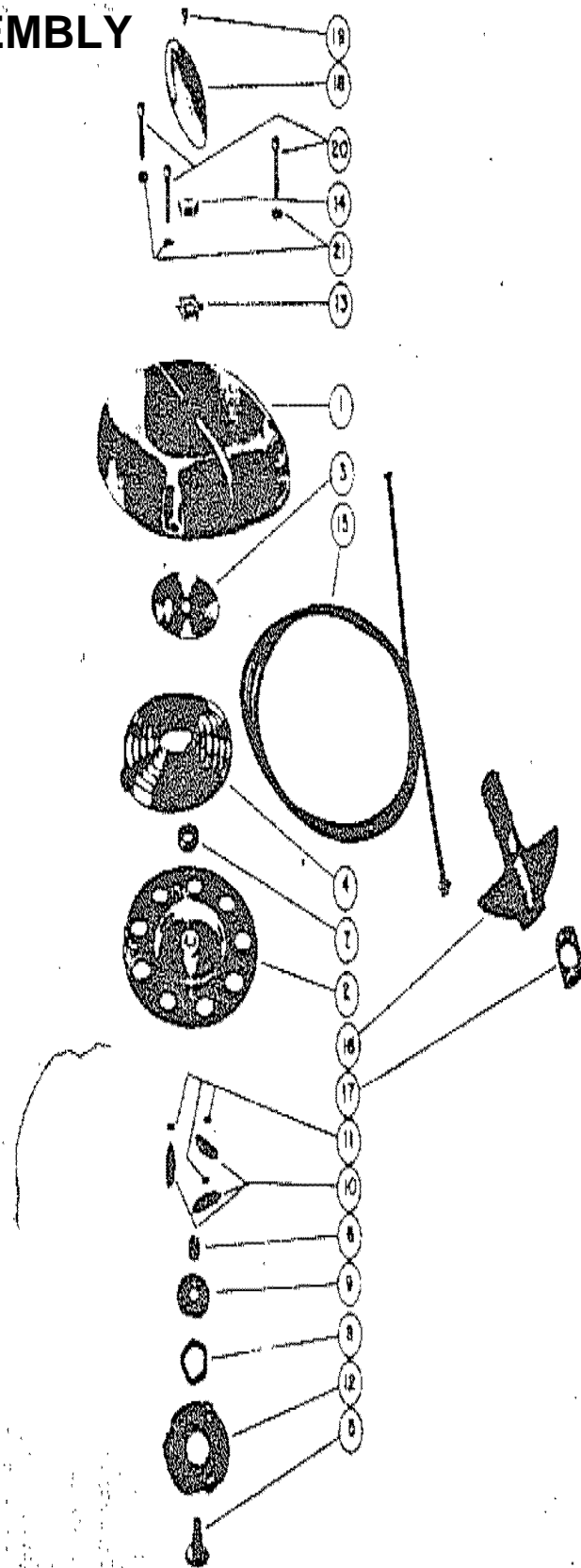
NS = Not Shown

THESE PARTS BOOKS/FICHE CARD ARE COPYRIGHTED AND MAY NOT BE DISTRIBUTED OR REPRODUCED IN ANY OTHER FORMAT BY ANYONE OTHER THAN MERCURY MARINE WITHOUT THE PRIOR WRITTEN CONSENT OF MERCURY MARINE.

ACCESSORIES

REF. NO.	PART NO.	SYM.	QTY.	DESCRIPTION
-	27-24270		0	GASKET SET, MOTOR OVERHAUL (KF9)
-	27-24110		0	GASKET SET, MOTOR OVERHAUL (KG9 & KG9-1)
-	27-20558		0	GASKET SET, MOTOR OVERHAUL (MK40)
-	24113		0	FLUSHING DEVICE
-	24736A3		0	CARRYING HANDLES
-	48-24509		0	PROPELLER, 2 BLADE - BRONZE (12 1/2" PITCH)
-	48-24513		0	PROPELLER, 2 BLADE - BRONZE (13 1/2" PITCH)
-	48-24563		0	PROPELLER, 2 BLADE - BRONZE (11 1/2" PITCH)
-	48-24520		0	PROPELLER, 2 BLADE - BRONZE (11" PITCH)
-	1399-587		0	GASKET AND PACKING SET, CARBURETOR (AJ-31A & AJ-33A)
-	1399-594		0	REPAIR PARTS KIT, CARBURETOR (AJ-31A)
-	1399-601		0	REPAIR PARTS KIT, CARBURETOR (AJ-33A)

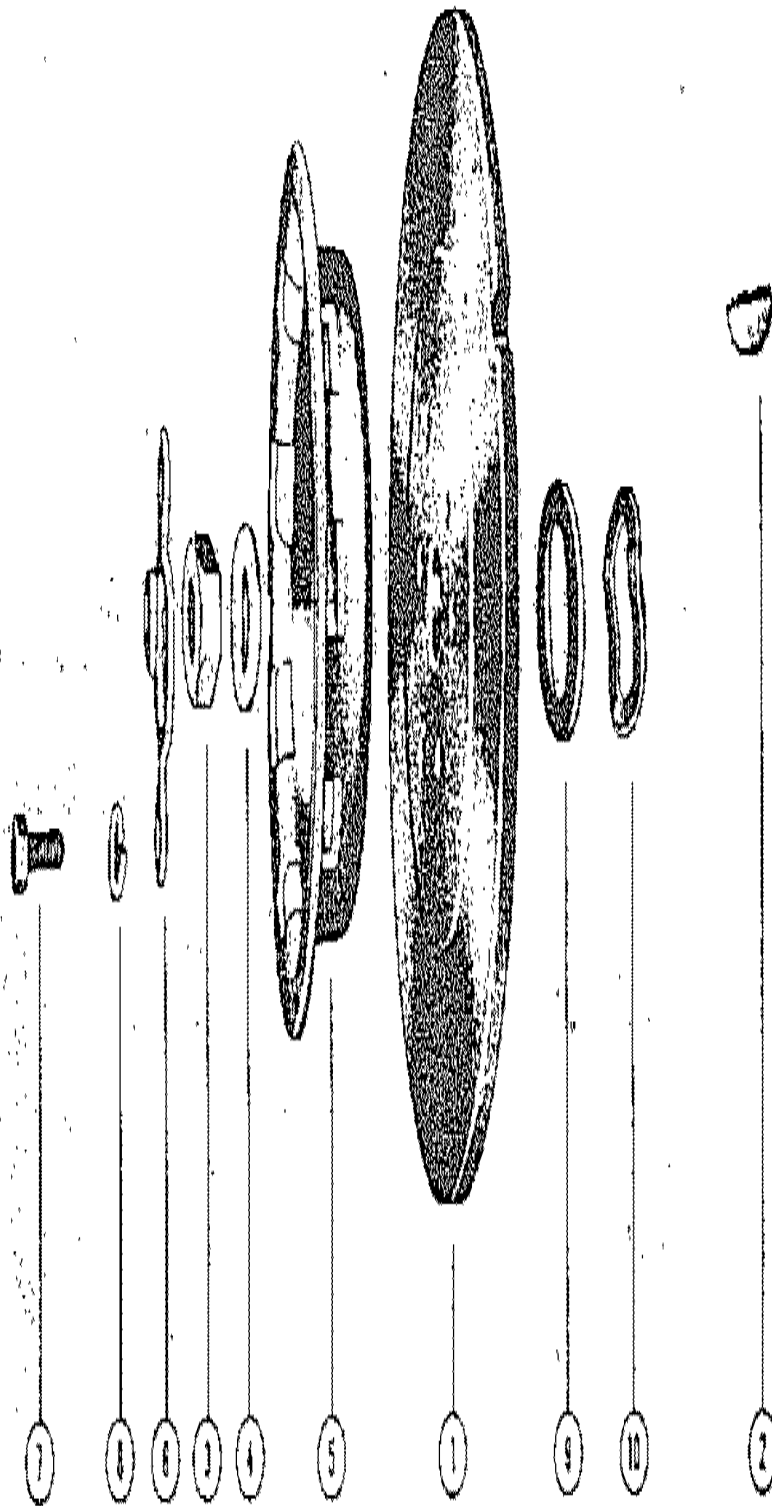
STARTER ASSEMBLY



STARTER ASSEMBLY

REF. NO.	PART NO.	SYM.	QTY.	DESCRIPTION
-	144-769A2		,1	STARTER ASSEMBLY, COMPLETE
1	144-769A1		,1	STARTER HOUSING ASSEMBLY
	141-766A1		1,	STARTER HOUSING ASSEMBLY
2	50-20149		1,1	STARTER SHEAVE ASSEMBLY
3	20155		1,1	RETAINER, REWIND SPRING
4	24-23714		1,1	SPRING, STARTER REWIND
5	20157		1,1	SHAFT, STARTER SHEAVE
6	23-20158		1,1	SPACER SHEAVE SHAFT
7	23-20159		1,1	BUSHING, SPRING GUIDE
8	13-20160		1,1	WAVE WASHER
9	20161		1,1	RETAINER, WAVE WASHER
10	20162		3,3	PAWL, STARTER
11	13-20163		3,3	WAVE WASHER, STARTER PAWL
12	20161		1,1	PLATE, RETAINER - STARTER PAWL
13	14-20165		1,1	TAB WASHER, SHEAVE SHAFT NUT
14	11-20166		1,1	NUT, SHEAVE SHAFT
15	50-22791A1		1,1	STARTER CABLE ASSEMBLY
16	20171		1,1	HANDLE, STARTER CABLE
17	20172		1,1	END CAP, STARTER CABLE HANDLE
18	21635		1,1	COVER, TRIM - STARTER COVER
19	10-20322		1,1	SCREW, TRIM COVER TO STARTER HOUSING
20	10-20098		,3	SCREW, STARTER COVER TO TIMING CASE
21	13-20147		3,3	LOCKWASHER, STARTER COVER SCREW
-	10-20289		3,	SCREW, STARTER COVER TO GEAR CASE COVER
-	12-20028		3,	WASHER, STARTER COVER SCREW

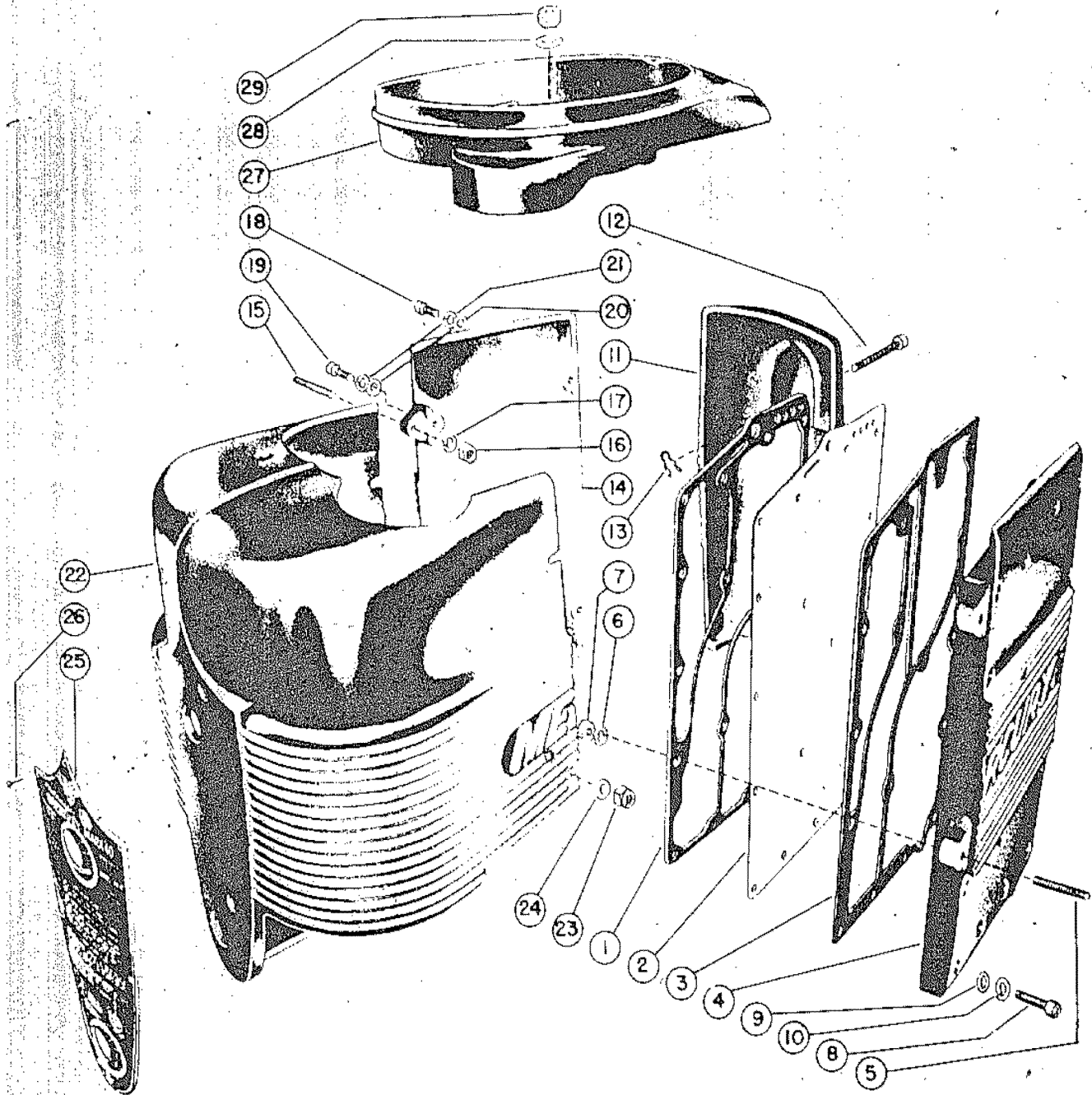
FLYWHEEL AND AUXILIARY STARTER PLATE



FLYWHEEL AND AUXILIARY STARTER PLATE

REF. NO.	PART NO.	SYM.	QTY.	DESCRIPTION
-	202-297		1,1,1,	FLYWHEEL
1	205-474		„1,1	FLYWHEEL
2	28-20141		1,1,1,1	KEY, FLYWHEEL DRIVE
-	11-21848		1,1,1,	NUT, FLYWHEEL
3	11-20142		„1,1	NUT, FLYWHEEL
-	13-21849		1,1,1,	LOCKWASHER, FLYWHEEL NUT
4	12-20143		„,1	WASHER, FLYWHEEL NUT
5	20144		1,1,1,1	PLATE, AUXILIARY STARTING
6	20145		„,1	PLATE, FLYWHEEL NUT LOCKING
-	10-20031		3,3,3,	SCREW, AUXILIARY PLATE TO FLYWHEEL
-	13-20147		3,3,3,	LOCKWASHER, AUXILIARY PLATE SCREW
7	10-20146		„,3	SCREW, LOCKING PLATE TO FLYWHEEL
8	13-20147		„,3	LOCKWASHER, LOCKING PLATE SCREW
9	12-24673		„,1	WASHER, FLYWHEEL
10	13-24674		„,1	WAVE WASHER

COWLING

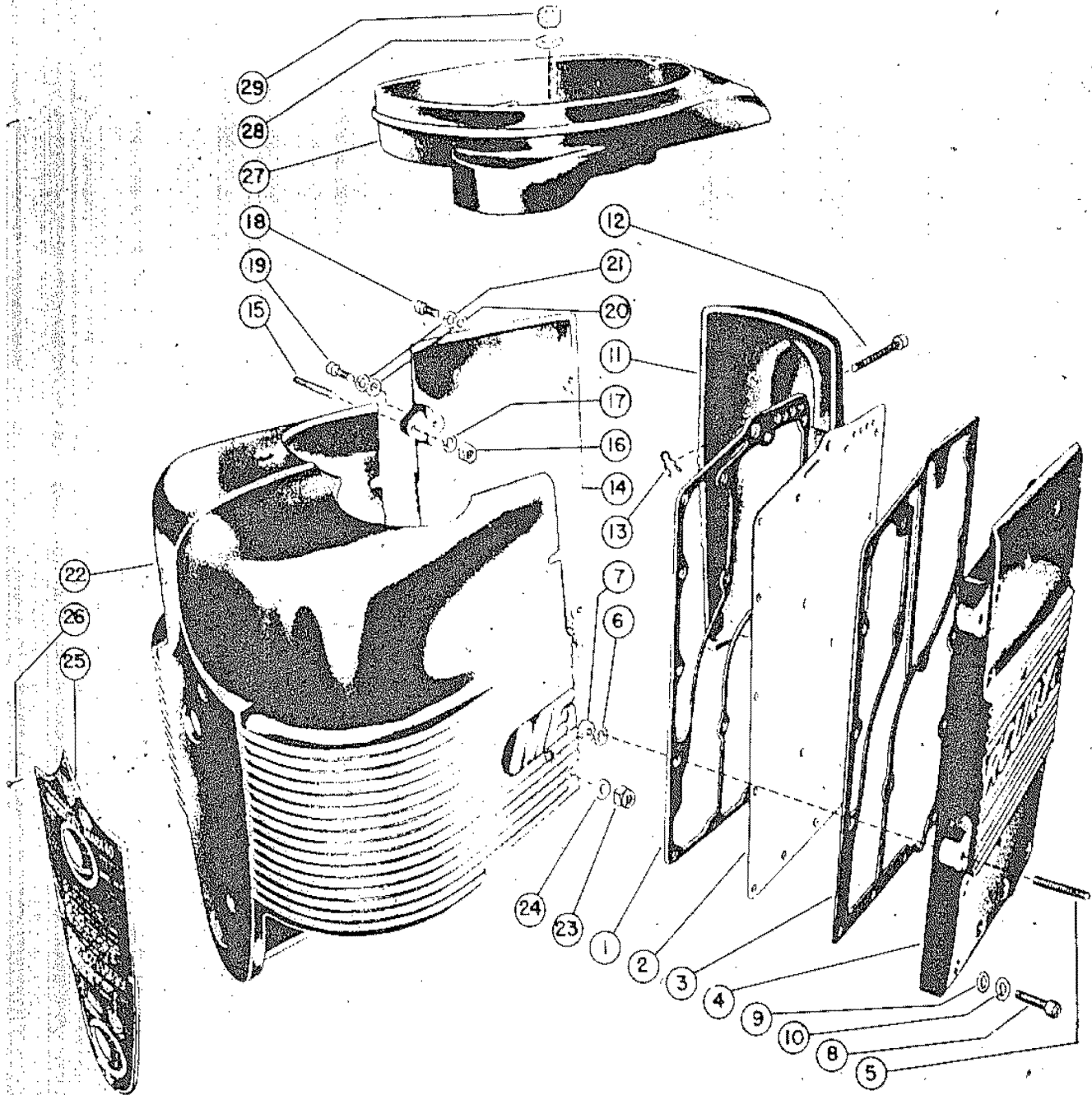


COWLING

REF. NO.	PART NO.	SYM.	QTY.	DESCRIPTION
1	27-23148		1,,,	GASKET, CYLINDER BLOCK TO MANIFOLD PLATE
	27-23160		1,1,1,	GASKET, CYLINDER BLOCK TO MANIFOLD PLATE
	27-20095		,,,1	GASKET, CYLINDER BLOCK TO MANIFOLD PLATE
2	23147		1,,,	PLATE, EXHAUST MANIFOLD
	20096		1,1,1,1	PLATE, EXHAUST MANIFOLD
3	27-23149		1,,,	GASKET, MANIFOLD PLATE TO COVER
	27-23159		1,1,1,	GASKET, MANIFOLD PLATE TO COVER
	27-20097		,,,1	GASKET, MANIFOLD PLATE TO COVER
-	23146		1,,,	COVER, EXHAUST MANIFOLD
-	23165A1		0	EXHAUST MANIFOLD COVER ASSEMBLY USED ONLY WITH REWIND STARTE
4	23575A1		1,1,1,	EXHAUST MANIFOLD COVER ASSEMBLY
	20073A2		,,,1	EXHAUST MANIFOLD COVER ASSEMBLY
-	23165		0	COVER, EXHAUST MANIFOLD USED ONLY WITH REWIND STARTER
5	16-21857		2,2,2,2	STUD, EXHAUST MANIFOLD COVER MOUNTING
6	13-20147		2,2,2,2	LOCKWASHER, EXHAUST MANIFOLD COVER STUD
7	11-20890		2,2,2,2	NUT, EXHAUST MANIFOLD COVER STUD
-	16-23150		17,17,,	STUD, MANIFOLD COVER MOUNTING
8	10-20098		,,17,17	SCREW, MANIFOLD COVER MOUNTING
9	12-20028		17,17,17,1	WASHER, MANIFOLD COVER MOUNTING SCREW & STUD
10	13-20147		,,17,17	LOCKWASHER, MANIFOLD COVER MOUNTING SCREW
-	11-24650		17,17,,	NUT,MANIFOLD COVER MOUNTING STUD
11	23157		1,1,1,1	SPARK PLUG COVER ASSEMBLY
12	10-21504		2,2,2,2	SCREW, COVER MOUNTING
13	18-21069		2,2,2,2	COTTER PIN, COVER MOUNTING SCREW
-	23156A1		1,1,1,	INTAKE COVER ASSEMBLY
-	23109A1		,,,1	INTAKE COVER ASSEMBLY
14	23156		1,1,1,	COVER, INTAKE SIDE
	23109		,,,1	COVER, INTAKE SIDE
15	16-21857		2,,2,2	STUD, INTAKE COVER
	16-20074		,2,,	STUD, INTAKE COVER
16	11-20890		2,2,2,2	NUT, INTAKE COVER STUD
17	13-20147		2,2,2,2	LOCKWASHER, INTAKE COVER STUD
18	10-20098		2,2,2,2	SCREW, INTAKE COVER MOUNTING (REAR)
19	10-20482		2,2,2,2	SCREW, INTAKE COVER MOUNTING (FRONT)
20	12-20028		4,4,4,4	WASHER, INTAKE COVER MOUNTING SCREW
21	13-20147		4,4,4,4	LOCKWASHER, INTAKE COVER MOUNTING SCREW
22	122-501		1,1,1,	COWL, FRONT
	124-513		,,,1	COWL, FRONT
-	123-510		0	COWL, FRONT (USED ONLY WITH REWIND STARTER)
-	10-22445		3,,,	SCREW, FRONT COWL MOUNTING
-	10-24222		1,,,	SCREW, FRONT COWL MOUNTING
23	11-20361		,4,4,4	NUT, FRONT COWL MOUNTING STUD

CONTINUED ON NEXT PAGE ➡

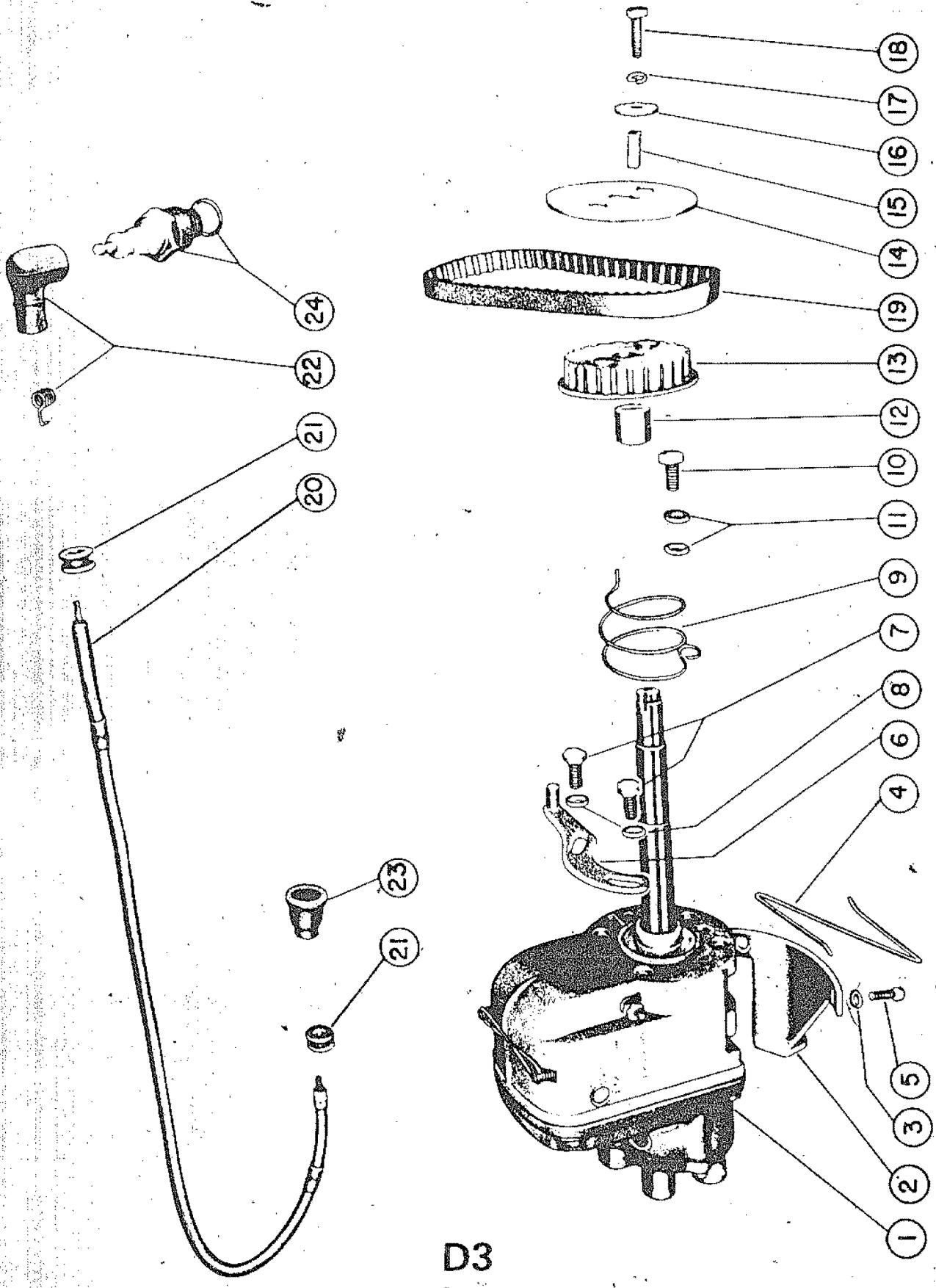
COWLING



COWLING

REF. NO.	PART NO.	SYM.	QTY.	DESCRIPTION
24	12-24664		,4,4,4	WASHER, FRONT COWL MOUNTING STUD
-	38-23378		1,,	SERIAL PLATE
-	38-23416		,1,1,	SERIAL PLATE
25	38-23425		,,,1	SERIAL PLATE
26	10-20314		6,6,6,6	SCREW, DRIVE - SERIAL PLATE
27	24003		,,,1	COVER, TIMING CASE
28	12-20084		,,,3	WASHER, TIMING CASE COVER MOUNTING STUD
29	11-20083		,,,3	NUT, TIMING CASE COVER MOUNTING STUD
-	21845A1		1,1,,	GEAR CASE COVER ASSEMBLY
-	21862A1		,,1,	GEAR CASE COVER ASSEMBLY
-	23096A1		0	GEAR CASE COVER ASSEMBLY (USED ONLY WITH REWIND STARTER)
-	21845		1,1,,	COVER, GEAR CASE
-	21862		,,1,	COVER, GEAR CASE
-	23096		0	COVER, GEAR CASE (USED ONLY WITH REWIND STARTER)
-	19-21846		1,1,1,	WELCH PLUG (NOT USED IN KG9-1-S)
-	26-21844		1,1,1,	OIL SEAL, GEAR CASE COVER
-	30-21833		1,1,,	BEARING, BALL - GEAR CASE COVER
-	30-21863		,,1,	BEARING, BALL - GEAR CASE COVER
-	22-21290		1,1,1,	PIPE PLUG, GEAR CASE COVER
-	21855		1,1,1,	FITTING, GREASE
-	16-21856		1,1,1,	STUD, FUEL PUMP MOUNTING
-	27-21847		1,1,1,	GASKET, GEAR CASE COVER
-	10-20474		5,5,5,	SCREW, GEAR CASE COVER MOUNTING
-	10-20653		7,7,7,	SCREW, GEAR CASE COVER MOUNTING
-	12-20028		12,12,12,	WASHER, COVER SCREW
-	11-20088		7,7,7,	NUT, COVER SCREW

MAGNETO (EXTERNAL PARTS)



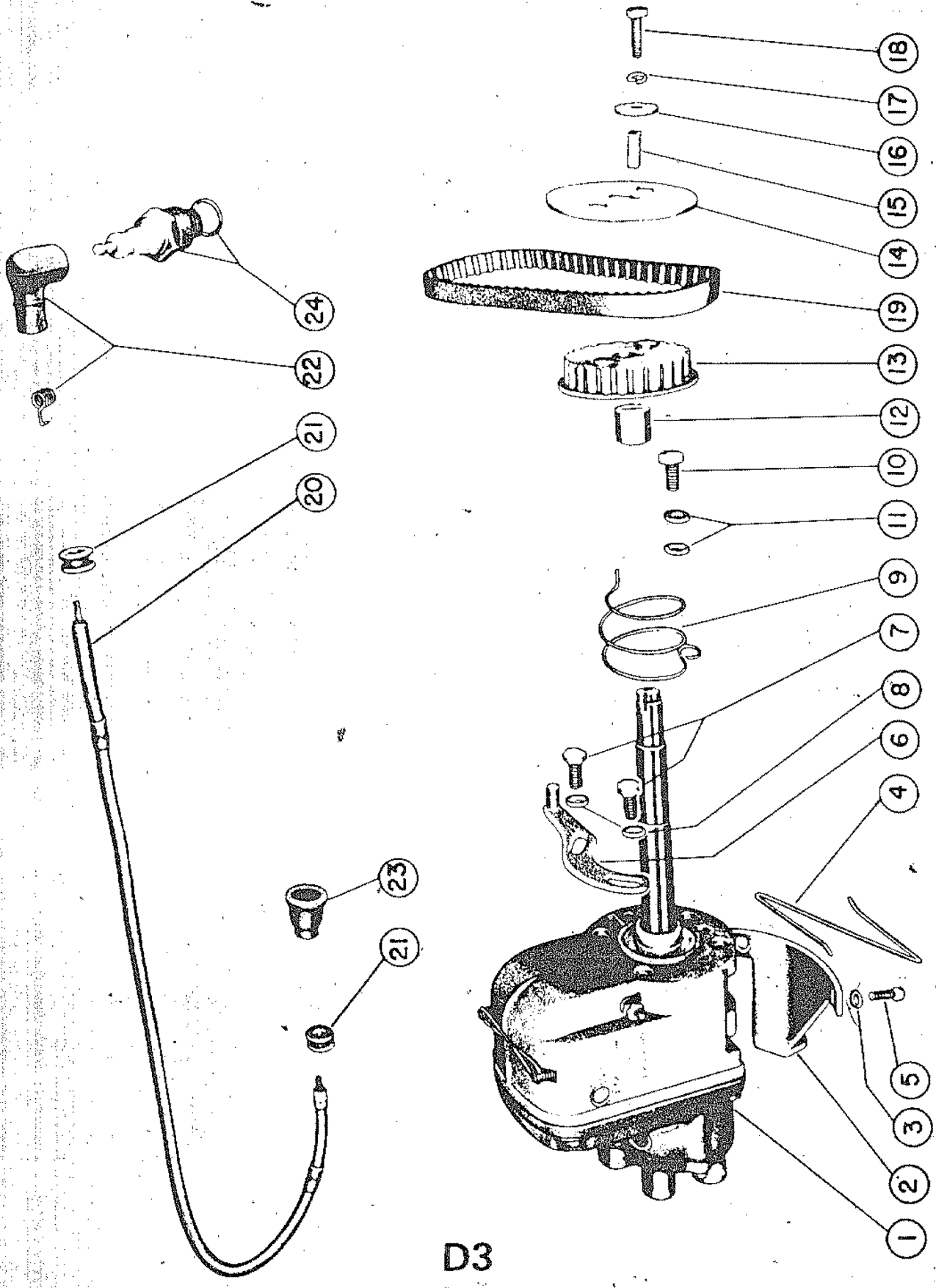
D3

MAGNETO (EXTERNAL PARTS)

REF. NO.	PART NO.	SYM.	QTY.	DESCRIPTION
1	304-372		1,1,1,	MAGNETO ASSEMBLY, COMPLETE
	325-1023		,,,1	MAGNETO ASSEMBLY, COMPLETE
2	23994		1,1,1,1	BRACKET, MAGNETO ACTUATING
-	23-23996		2,2,,	SPACER, MAGNETO ACTUATING BRACKET
3	12-20128		2,2,2,2	WASHER, MAGNETO ACTUATING BRACKET SCREW
-	13-20040		2,2,,	LOCKWASHER, MAGNETO ACTUATING BRACKET
4	20129		,,1,1	LOCK WIRE, MAGNETO ACTUATING BRACKET SCREW
5	10-20130		2,2,2,2	SCREW, MAGNETO ACTUATING BRACKET
6	20131A1		1,1,1,1	CARBURETOR ACTUATING BRACKET ASSEMBLY
7	10-20031		2,2,2,2	SCREW, CARBURETOR ACTUATING BRACKET MOUNTING
8	12-20028		2,2,2,2	WASHER, CARBURETOR ACTUATING BRACKET SCREW
9	24-20297		1,1,1,1	SPRING, MAGNETO ASSEMBLY TORSION
10	10-20031		1,1,1,1	SCREW, TORSION SPRING MOUNTING
11	12-20028		2,2,2,2	WASHER, TORSION SPRING MOUNTING SCREW
12	23-20134		,,,1	SPACER, MAGNETO TIMING PULLEY
13	23646		,,,1	PULLEY, DRIVEN
14	20136		,,,1	FLANGE, DRIVEN PULLEY
15	28-20137		,,,1	KEY, MAGNETO DRIVING
16	12-20138		,,,1	WASHER, MAGNETO PULLEY CLAMPING SCREW
17	13-20040		,,,1	LOCKWASHER, MAGNETO PULLEY CLAMPING SCREW
18	10-20139		,,,1	SCREW, MAGNETO PULLEY CLAMPING
19	20140		,,,1	BELT, TIMING
-	23-23997		1,1,1,	SPACER, MAGNETO GEAR
-	43-24001		1,1,1,	GEAR, MAGNETO DRIVE
-	43-23998		1,,,	GEAR, MAGNETO DRIVE
-	28-23999		1,1,1,	KEY, MAGNETO GEAR DRIVING
-	12-20138		1,1,1,	WASHER, MAGNETO SHAFT SCREW
-	13-20040		1,1,1,	LOCKWASHER, MAGNETO SHAFT SCREW
-	10-20139		1,1,1,	SCREW, MAGNETO SHAFT
-	21834A1		1,1,1,	TACHOMETER DRIVE SHAFT HOUSING ASSEMBLY
-	21834		1,1,1,	HOUSING, TACHOMETER DRIVE SHAFT
-	31-21835		1,1,1,	BEARING, ROLLER - TACHOMETER DRIVE SHAFT
-	23088A1		1,1,1,	TACHOMETER DRIVE SHAFT & PIN ASSEMBLY
-	17-21867		,,1,	PIN, DRIVE GEAR TO DRIVE SHAFT
-	26-20236		1,1,1,	OIL SEAL, TACHOMETER DRIVE SHAFT
-	25-21836		1,1,1,	"O" RING, ASSMEBLY DRIVE SHAFT
-	17-21829		1,1,1,	PIN, DRIVE GEAR TO DRIVE SHAFT
-	53-21837		1,1,1,	RING, SNAP - TACHOMETER DRIVE SHAFT
-	43-21838		1,1,1,	GEAR, TACHOMETER DRIVE
-	43-23574		1,,,	GEAR, TACHOMETER DRIVE
-	12-20084		1,1,1,	WASHER, TACHOMETER DRIVE SHAFT
-	11-21929		1,1,1,	NUT, JAM - TACHOMETER DRIVE SHAFT
-	21839		1,1,1,	CAP, TACHOMETER DRIVE

CONTINUED ON NEXT PAGE ➡

MAGNETO (EXTERNAL PARTS)

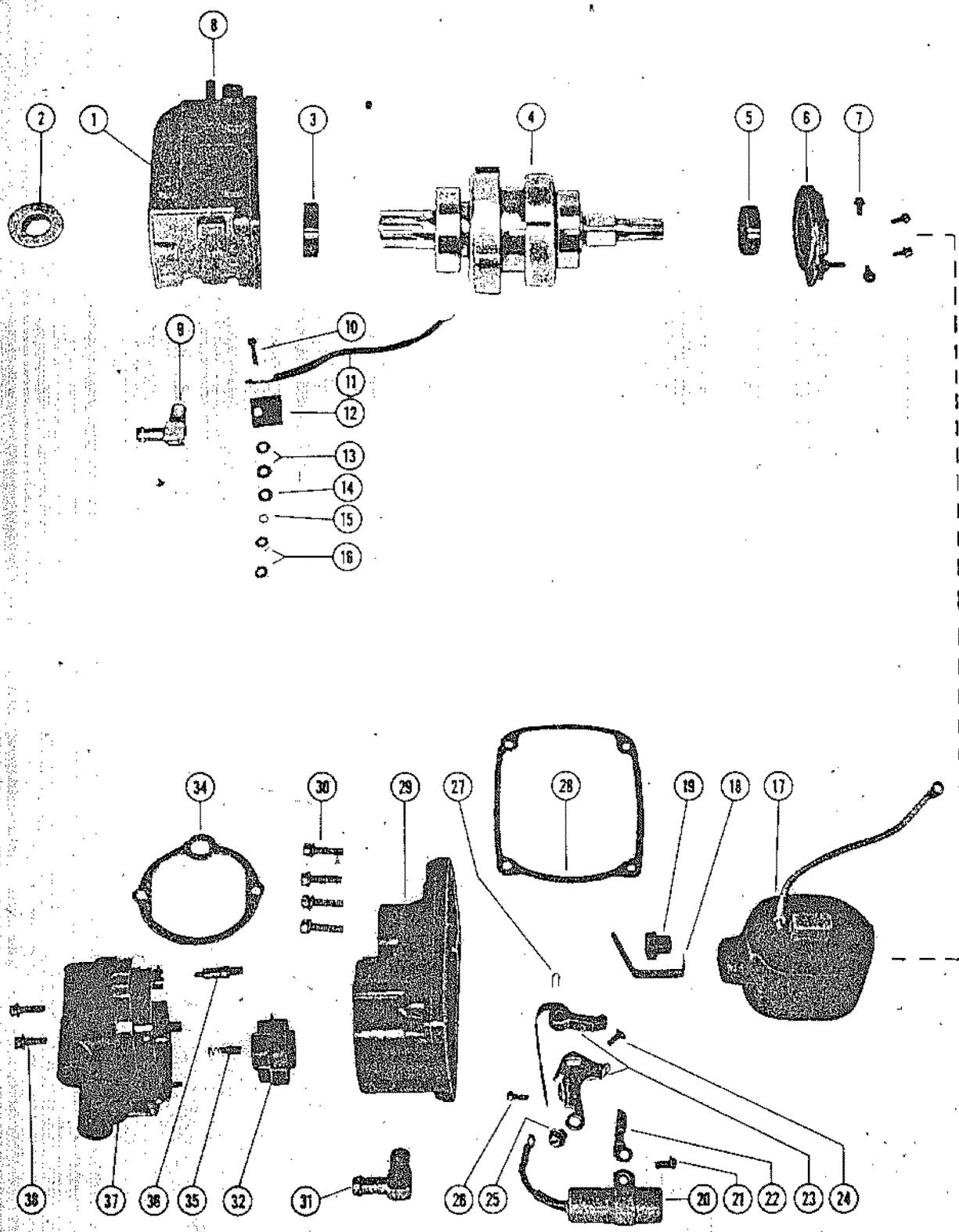


D3

MAGNETO (EXTERNAL PARTS)

REF. NO.	PART NO.	SYM.	QTY.	DESCRIPTION
-	12-21840		1,1,1,	WASHER, THRUST - TACHOMETER DRIVE SHAFT
-	21841A1		1,1,,	CAM SHAFT ASSEMBLY
-	21861A1		,,1,	CAM SHAFT ASSEMBLY
-	21841		1,1,,	SHAFT, CAM
-	21861		,,1,	SHAFT, CAM
-	43-21850		1,1,1,	GEAR, MAGNETO DRIVE IDLER
-	43-23573		1,,,	GEAR, MAGNETO DRIVE IDLER
-	17-21829		1,1,1,	PIN, MAGNETO DRIVE GEAR
-	43-21828		1,1,1,	GEAR, CRANKSHAFT
-	43-23572		1,,,	GEAR, CRANKSHAFT
-	17-21829		1,1,1,	PIN, CRANKSHAFT GEAR DRIVING
-	24000		4,4,4,	HIGH TENSION LEAD & CLIP
-	21264		4,4,4,	CLIP, HIGH TENSION LEAD
20	20114A2		,,2,2	HIGH TENSION LEAD ASSEMBLY (NO. 1 & 4 CYLINDERS)
	20122A2		,,2,2	HIGH TENSION LEAD ASSEMBLY (NO. 2 & 3 CYLINDERS)
-	20121		,,4,4	TERMINAL, HIGH TENSION LEAD
21	25-20116		8,8,8,8	GROMMET, HIGH TENSION LEAD
22	20119		4,4,4,4	PROTECTOR, SPARK PLUG
23	20120		4,4,4,4	CAP, RUBBER - HIGH TENSION LEAD
24	33-22805		4,,,	SPARK PLUG
	33-20127		,4,4,4	SPARK PLUG

MAGNETO (INTERNAL PARTS)

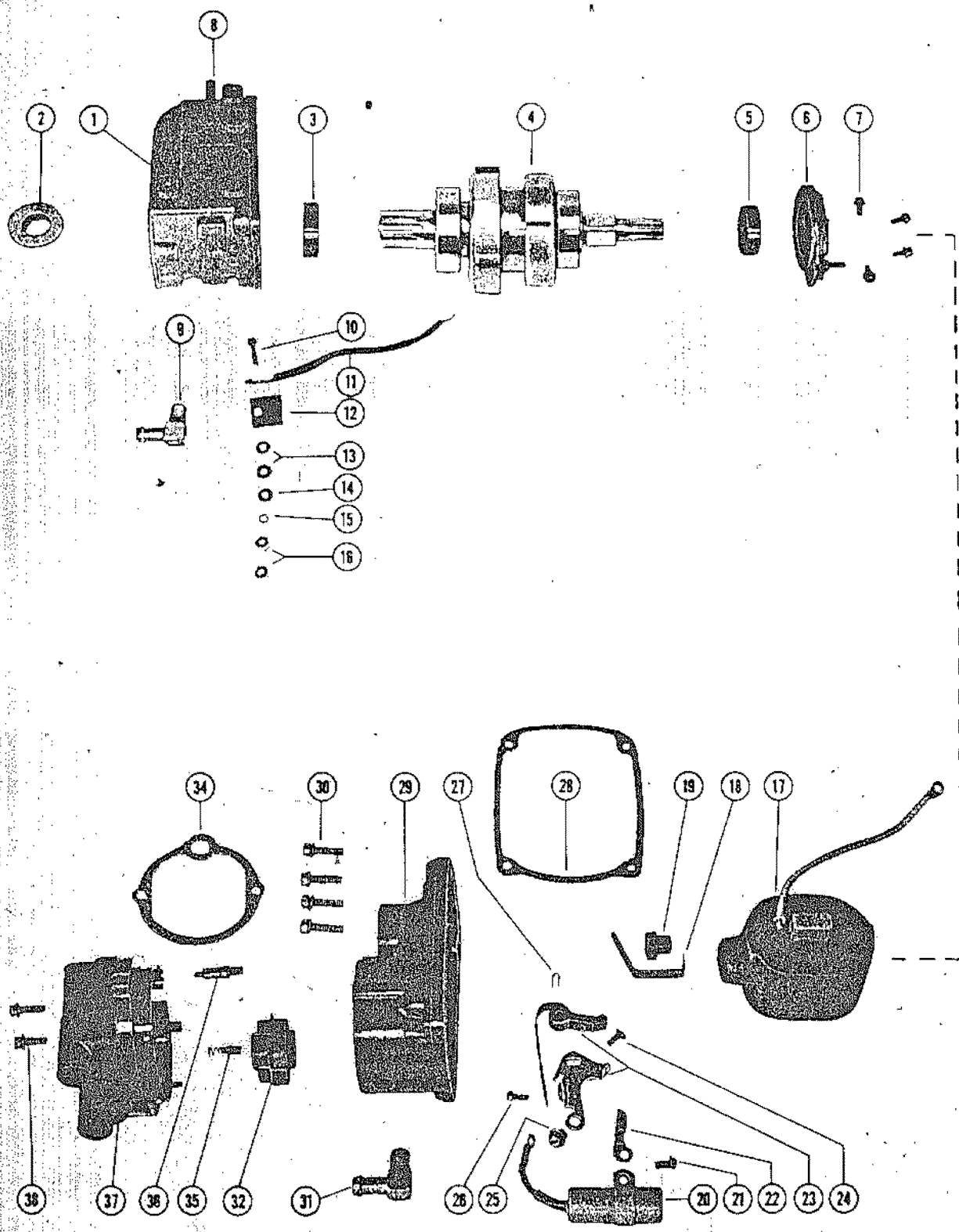


MAGNETO (INTERNAL PARTS)

REF. NO.	PART NO.	SYM.	QTY.	DESCRIPTION
-	304-372		1,1,1,	MAGNETO ASSEMBLY, COMPLETE
-	325-1023		,,,1	MAGNETO ASSEMBLY, COMPLETE
1	397-357		1,1,1,1	FRAME
2	397-369		1,1,1,1	SEAL, ROTOR SHAFT (DRIVE END)
3	30-22556		1,1,1,1	BEARING, BALL - ROTOR (DRIVE END)
-	397-908		1,1,1,1	WASHER, ROTOR SHAFT - OUTER SEAL (DRIVE END)
-	12-22547		1,1,1,1	WASHER, ROTOR SHAFT - INNER SEAL (DRIVE END)
-	12-22549		1,1,1,1	WASHER, INSULATING - BEARING (DRIVE END)
-	397-367		1,1,1,1	STRIP, BEARING INSULATING (DRIVE END)
-	15-22554		AR,AR,AR,A	SHIM, ROTOR SHAFT SEAL (DRIVE END)
-	12-22562		1,1,1,1	WASHER, ROTOR BEARING SEAL (DRIVE END)
4	397-744		1,1,1,	MAGNETIC ROTOR & SHAFT, COMPLETE
	397-381		,,,1	MAGNETIC ROTOR & SHAFT, COMPLETE
5	30-22557		1,1,1,1	BEARING, BALL - ROTOR (OPPOSITE DRIVE END)
6	397-370		1,1,1,1	SUPPORT, BEARING
7	10-22540		4,4,4,4	SCREW & LOCKWASHER, BEARING SUPPORT
-	12-22563		1,1,1,1	WASHER, ROTOR BEARING SEAL (OPPOSITE DRIVE END)
-	26-22564		1,1,1,1	SEAL, BEARING SUPPORT
-	12-22550		1,1,1,1	WASHER, INSULATING - BEARING SUPPORT
-	397-368		1,1,1,1	INSULATOR, BEARING SUPPORT
8	10-22546		2,2,2,2	SCREW, SET - COIL BRIDGE
-	22555		1,1,1,1	LOCK WIRE, COIL BRIDGE SCREW
-	12-22560		3,3,3,3	WASHER, VENT SCREEN FASTENING
-	35-22561		6,6,6,6	SCREEN VENT
11	397-909		1,1,1,1	WIRE, PRIMARY GROUND
-	397-364		1,1,1,1	PRIMARY GROUND TERMINAL GROUP
10	10-22552		1,1,1,1	SCREW, PRIMARY GROUND
12	397-371		1,1,1,1	INSULATOR, PRIMARY GROUND TERMINAL
-	23-22544		1,1,1,1	BUSHING, INSULATING - GROUND SCREW
13	12-22559		2,2,2,2	WASHER, INSULATING - GROUND SCREW
14	12-22545		1,1,1,1	WASHER, GROUND SCREW
15	13-22543		1,1,1,1	LOCKWASHER, GROUND SCREW
16	11-22553		2,2,2,2	NUT, GROUND SCREW
-	397-363		1,1,1,1	WIRE, PRIMARY TERMINAL
-	397-361		1,1,1,1	COIL
20	397-874		1,1,1,1	CONDENSER
21	10-22540		1,1,1,1	SCREW, CONDENSER MOUNTING
22	397-355		1,1,1,1	CAM WICK & HOLDER
23	397-352A1		1,1,1,1	BREAKER ASSEMBLY, COMPLETE
-	10-21307		2,,,	SCREW, CONTACT SUPPORT
-	10-20037		,2,2,	SCREW, CONTACT SUPPORT
-	12-22558		1,1,1,1	WASHER, CONTACT SUPPORT LOCKING SCREW
24	10-24004		,,1,	SCREW, CONTACT SUPPORT LOCKING

CONTINUED ON NEXT PAGE ➡

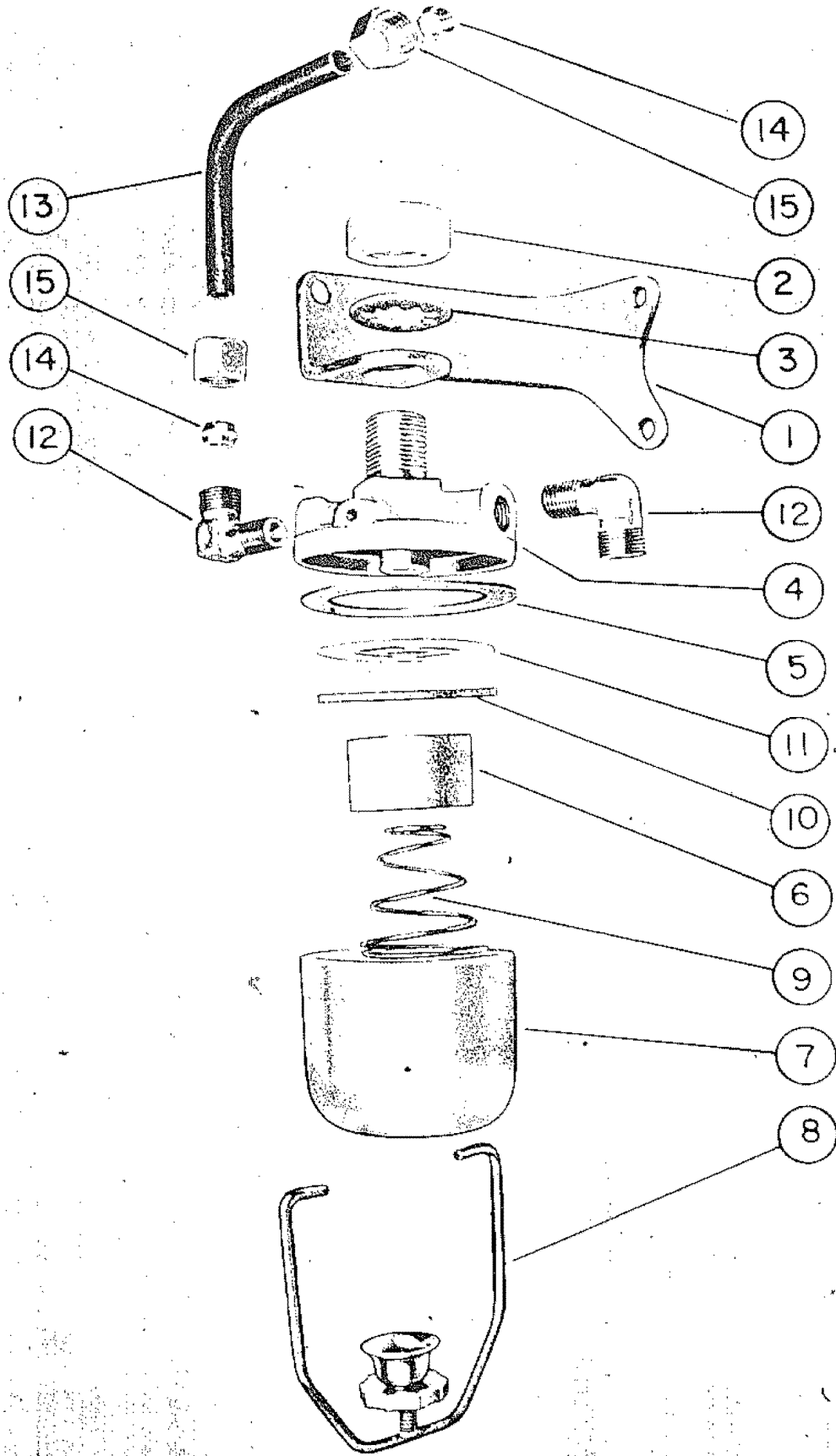
MAGNETO (INTERNAL PARTS)



MAGNETO (INTERNAL PARTS)

REF. NO.	PART NO.	SYM.	QTY.	DESCRIPTION
24	10-22535		,,1	SCREW, CONTACT SUPPORT LOCKING
-	13-22543		,,1,	LOCKWASHER, CONTACT SUPPORT LOCKING SCREW
25	10-22540		,,1,1	SCREW, CONTACT SUPPORT
-	13-22542		,,1,1	LOCKWASHER, CONTACT SUPPORT SCREW
26	10-22541		1,1,1,1	SCREW, BREAKER TERMINAL
27	18-22534		1,1,1,1	PIN, FULCRUM (SNAP RING)
28	27-22551		1,1,1,1	GASKET, END CAP
29	397-358		1,1,1,1	END CAP
30	10-22539		4,4,4,4	SCREW, END CAP TO FRAME
32	397-898		1,1,1,1	ROTOR, DISTRIBUTOR
33	24-22565		1,1,1,1	SPRING, ROTOR
34	27-22536		1,1,1,1	GASKET, END CAP COVER
35	397-360		1,1,1,1	BRUSH & SPRING, COIL LEAD
36	397-356		1,1,1,1	ROD, DISTRIBUTOR HIGH TENSION LEAD
37	397-743		1,1,1,	COVER, END CAP
	397-351		,,1,1	COVER, END CAP
38	10-22537		2,2,2,2	SCREW, END CAP COVER TO END CAP

FUEL FILTER AND BRACKET

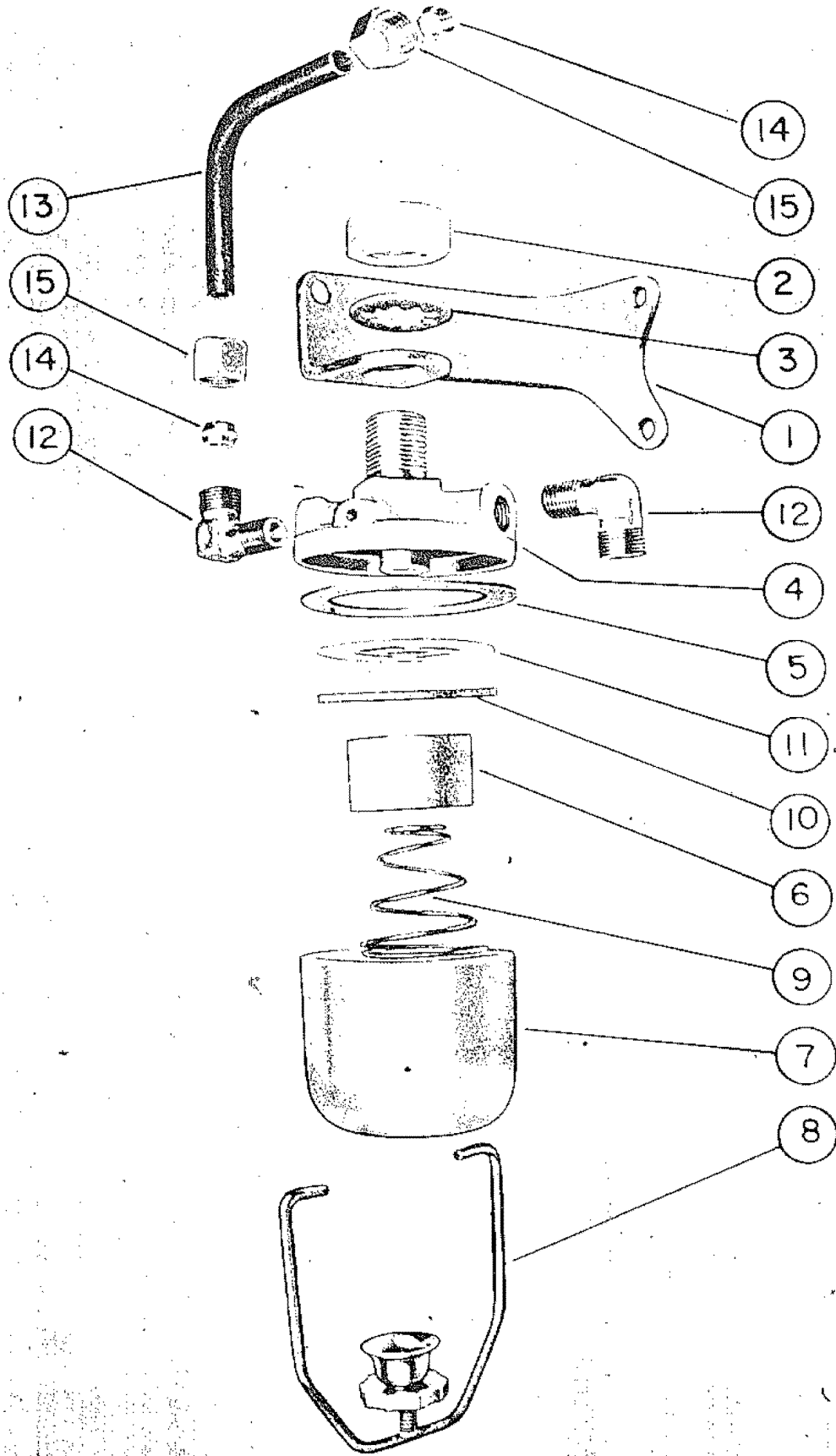


FUEL FILTER AND BRACKET

REF. NO.	PART NO.	SYM.	QTY.	DESCRIPTION
-	23363		1,1,1,	BRACKET, FUEL FILTER
1	20493		„1,1	BRACKET, FUEL FILTER
2	11-23443		„1,1	NUT, FUEL FILTER TOP
3	13-20494		„1,1	LOCKWASHER, FUEL FILTER TOP
-	10-21625		2,2,2,	SCREW, FUEL FILTER ATTACHING
-	12-20028		2,2,2,	WASHER, FUEL FILTER ATTACHING SCREW
-	11-20088		2,2,2,	NUT, FUEL FILTER ATTACHING SCREW
-	23357A1		1,1,1,	FUEL FILTER ASSEMBLY
-	35-23440		„1,	FUEL FILTER ASSEMBLY
-	35-20555A2		„„1	FUEL FILTER ASSEMBLY
-	23358		1,1,1,	TOP, FUEL FILTER
-	25042		„1,	TOP, FUEL FILTER
4	20495		„„1	TOP, FUEL FILTER
-	27-23359		1,1,1,	GASKET, FILTER TOP
-	27-23444		„1,	GASKET, FILTER TOP
5	27-20496		„„1	GASKET, FILTER TOP
-	35-23342		1,1,1,	ELEMENT, FUEL FILTER
-	35-23445		„1,	ELEMENT, FUEL FILTER
6	35-20555		„„1	ELEMENT, FUEL FILTER
-	23357		1,1,1,	BOWL, FUEL FILTER
-	23446		„1,	BOWL, FUEL FILTER
7	20497		„„1	BOWL, FUEL FILTER
-	23447		„1,	BALE ASSEMBLY
8	20498		„„1	BALE ASSEMBLY
-	24-23360		1,1,1,	SPRING, FILTER ELEMENT RETAINING
9	24-20341		„„1	SPRING, FILTER ELEMENT RETAINING
-	23361		1,1,1,	END CAP, FILTER ELEMENT
-	12-21464		1,1,1,	WASHER, RUBBER - FILTER ELEMENT
-	27-23362		1,1,1,	GASKET, FILTER ELEMENT
10	27-20338		„„1	GASKET, FILTER ELEMENT
11	20499		„„1	PLATE, FILTER ELEMENT GASKET BACKING
-	22-23387		1,1,1,	ELBOW, FILTER TO FUEL LINE
12	22-20194		„1,	ELBOW, FILTER TO FUEL LINE
	22-20194		„„2	ELBOW, FILTER TO FUEL LINE
-	22-23386		1,1,1,	CONNECTOR, FILTER OUTLET
-	23468		„2,	ADAPTER EXTENSION, FUEL LINE
13	32-23492		„„1	FUEL LINE, FILTER TOP TO TEE UNION
-	32-23429		1,1,1,	FUEL LINE REPLACEMENT KIT, INLET TO FILTER

CONTINUED ON NEXT PAGE ➡

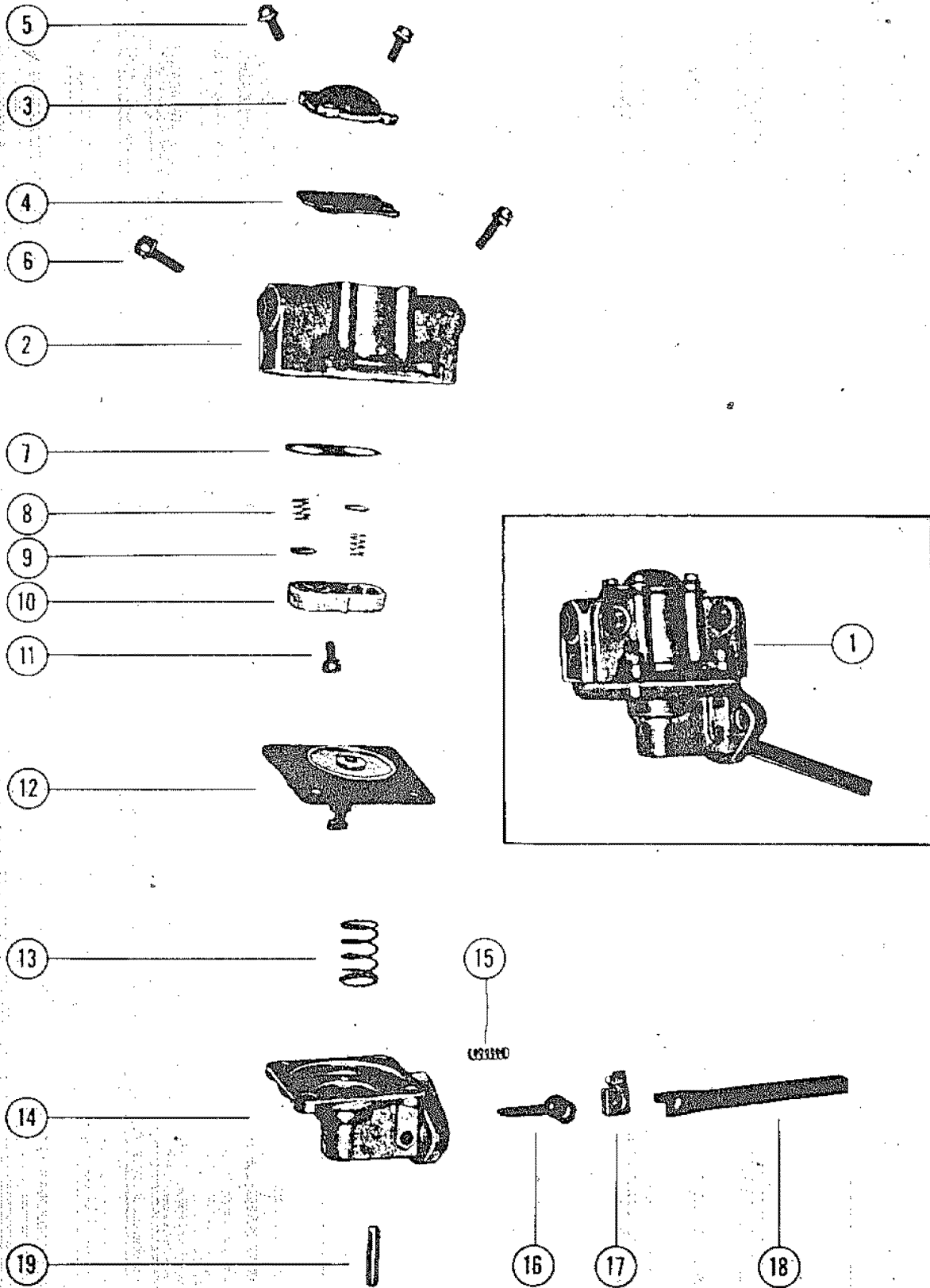
FUEL FILTER AND BRACKET



FUEL FILTER AND BRACKET

REF. NO.	PART NO.	SYM.	QTY.	DESCRIPTION
-	32-23430		1,1,1,	FUEL LINE ASSEMBLY, FILTER TO PUMP
-	32-23441		„1,	FUEL LINE ASSEMBLY, FILTER TO PUMP
14	22-21685		2,2,2,2	SLEEVE, COMPRESSION - FUEL LINE
15	11-21113		2,2,2,2	NUT, COMPRESSION - FUEL LINE
-	22-23386		1,1,1,	CONNECTOR, PUMP INLET

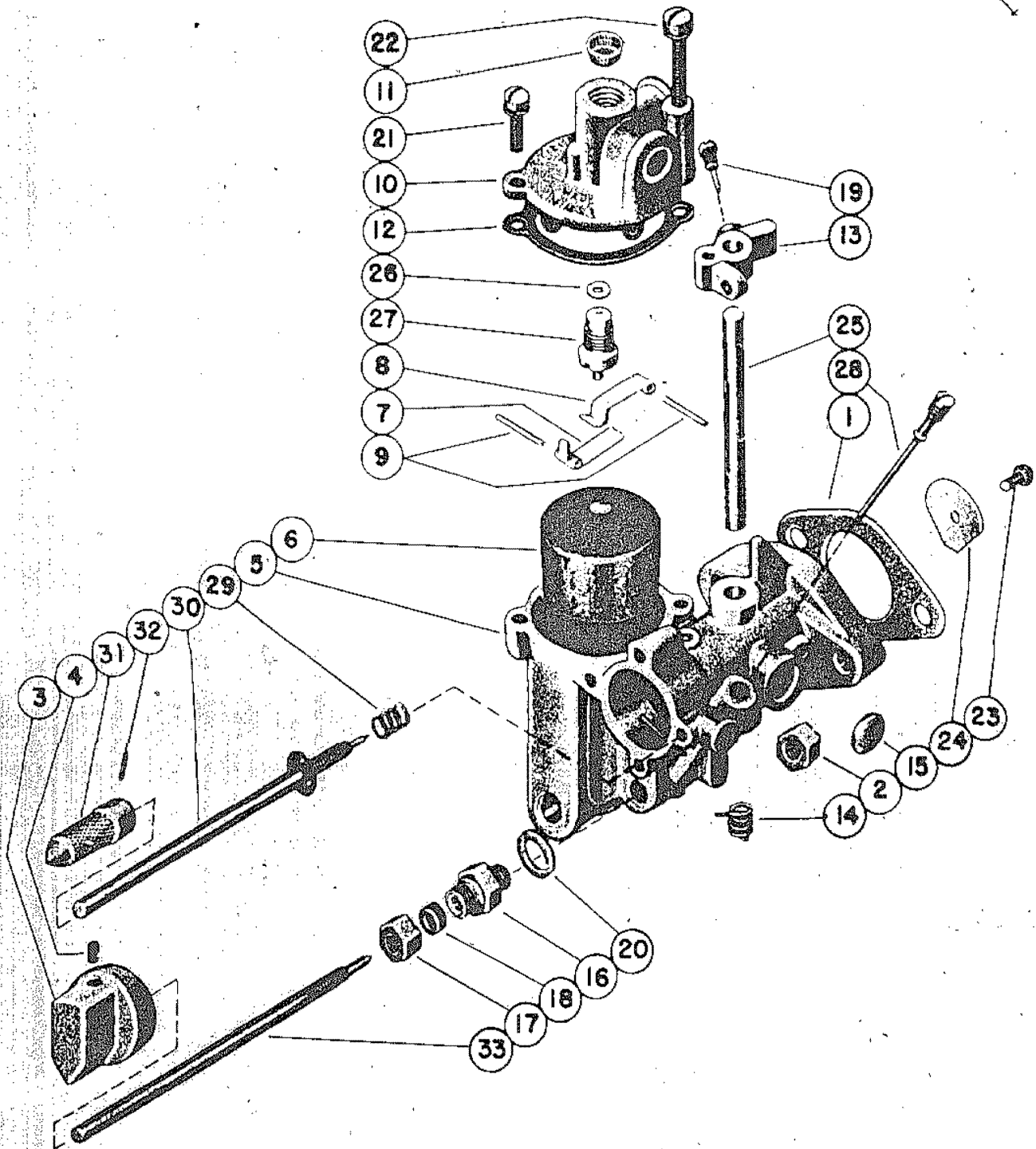
FUEL PUMP ASSEMBLY



FUEL PUMP ASSEMBLY

REF. NO.	PART NO.	SYM.	QTY.	DESCRIPTION
1	23355		1,1,1	FUEL PUMP ASSEMBLY
2	23394		1,1,1	SEAT, COVER AND OUTLET VALVE
-	23412		2,2,2	PIPE PLUG
3	23402		1,1,1	PLATE, COVER
4	23392		3,3,3	DIAPHRAGM, PULSATOR
5	10-23405		4,4,4	SCREW, COVER PLATE
-	13-23398		4,4,4	LOCKWASHER, COVER PLATE SCREW
6	10-23404		4,4,4	SCREW, COVER
-	13-23399		4,4,4	LOCKWASHER, COVER SCREW
7	27-23396		1,1,1	GASKET, VALVE RETAINER
8	23410		2,2,2	SPRING, VALVE
9	23411		2,2,2	VALVE
10	23403		1,1,1	RETAINER, VALVE
11	10-23406		1,1,1	SCREW, VALVE RETAINER
-	13-23400		1,1,1	LOCKWASHER, VALVE RETAINER SCREW
12	23390		1,1,1	DIAPHRAGM ASSEMBLY
13	24-23408		1,1,1	SPRING, DIAPHRAGM
14	23393		1,1,1	BODY, FUEL PUMP
15	24-23409		1,1,1	SPRING, ROCKER ARM
16	23397		1,1,1	LINK, ROCKER ARM
17	23407		1,1,1	SEAT, ROCKER ARM SPRING
18	23395		1,1,1	ARM, ROCKER
19	17-23401		1,1,1	PIN, ROCKER ARM
-	27-23356		1,1,1	GASKET, FUEL PUMP
-	12-20028		2,2,2	WASHER, FUEL PUMP MOUNTING STUD
-	11-20088		2,2,2	NUT, FUEL PUMP MOUNTING STUD
-	21-24687		1,1,1	CHECK VALVE, FUEL PUMP OUTLET
-	22-21280		1,1,1	ELBOW, FUEL PUMP OUTLET
-	32-23380		1,1,1	FUEL LINE, HAND PUMP TO FUEL PUMP
-	22-23387		1,,	ELBOW, FUEL LINE
-	22-24689		1,,	ELBOW, OUTLET

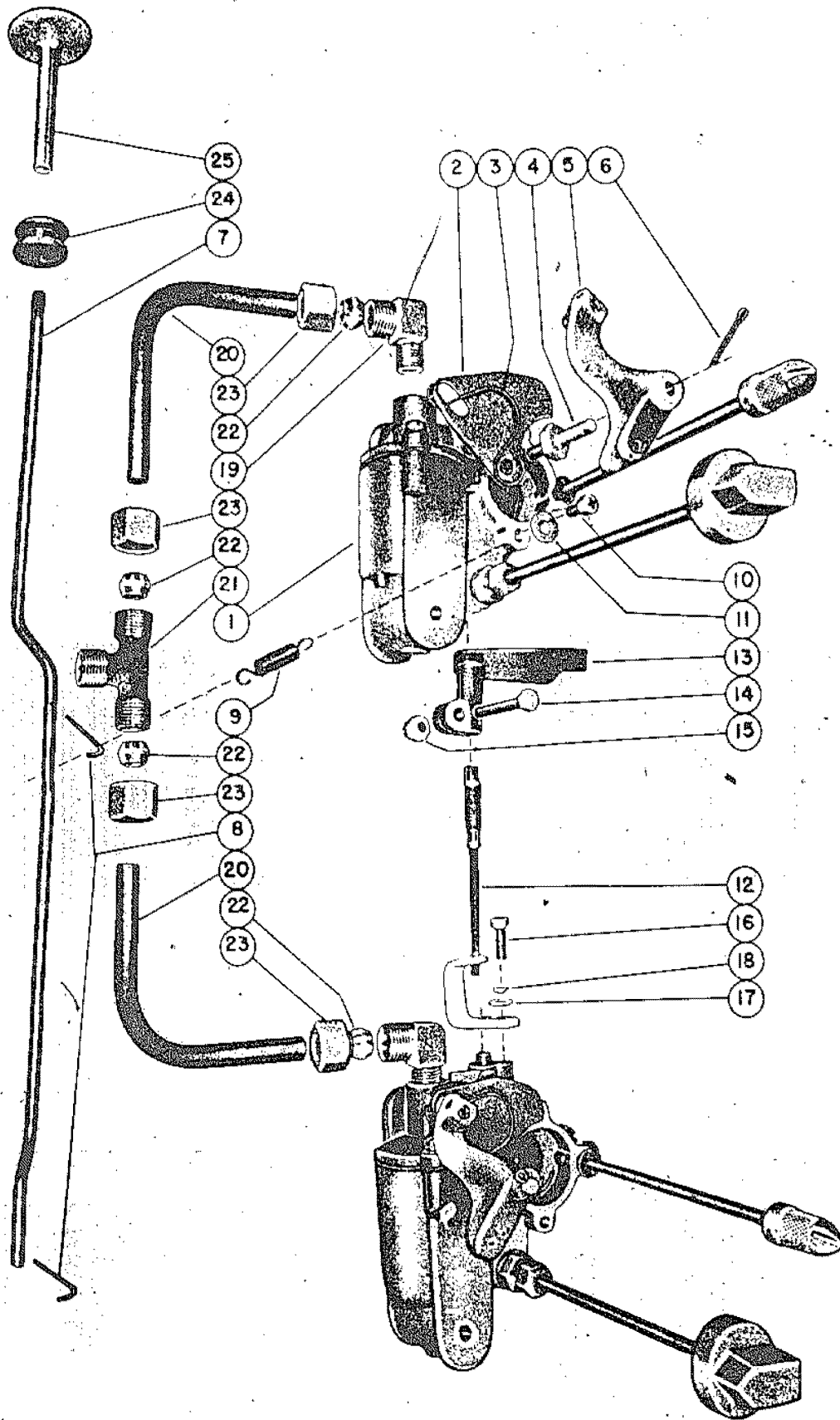
CARBURETOR ASSEMBLY



CARBURETOR ASSEMBLY

REF. NO.	PART NO.	SYM.	QTY.	DESCRIPTION
1	27-22023		2,,,	GASKET, CARBURETOR FLANGE
	27-20183		,2,2,2	GASKET, CARBURETOR FLANGE
2	11-20184		4,4,4,4	NUT, CARBURETOR MOUNTING STUD
3	25120		2,2,2,2	KNOB, HIGH SPEED ADJUSTING
4	10-24223		2,2,2,2	SET SCREW, HIGH SPEED ADJUSTING KNOB
5	1316-590		2,,,	CARBURETOR ASSEMBLY (TILLOTSON AJ-31A)
	1319-596		,2,2,2	CARBURETOR ASSEMBLY (TILLOTSON AJ-33A)
6	1399-603		2,2,2,2	FLOAT
7	1399-102		2,2,2,2	LEVER, FLOAT (LOWER)
8	1399-101		2,2,2,2	LEVER, FLOAT (UPPER)
9	17-20853		4,4,4,4	PIN, FLOAT LEVER
10	1399-217		2,2,2,2	COVER, FLOAT BOWL
11	1399-215		2,2,2,2	SCREEN, INLET - FLOAT BOWL COVER
12	1399-99		2,2,2,2	GASKET, FLOAT BOWL COVER
13	1399-97		2,2,2,2	LEVER, THROTTLE STOP
14	24-23191		2,2,2,2	SPRING, THROTTLE RETURN
15	19-20011		2,2,2,2	PLUG, WELCH - BODY CHANNEL
16	1399-94		2,2,2,2	GLAND, MAIN ADJUSTMENT SCREW
17	11-20849		2,2,2,2	NUT, MAIN ADJUSTMENT SCREW PACKING
18	1399-108		2,2,2,2	PACKING, MAIN ADJUSTING SCREW
19	10-20847		2,2,2,2	SCREW, THROTTLE STOP LEVER
20	27-20848		2,2,2,2	GASKET, MAIN ADJUSTMENT SCREW PACKING
21	10-23274		2,2,2,2	SCREW & LOCKWASHER, FLOAT BOWL COVER (SHORT)
22	10-20857		2,2,2,2	SCREW & LOCKWASHER, FLOAT BOWL COVER (LONG)
23	10-21471		2,2,2,2	SCREW & LOCKWASHER, THROTTLE SHUTTER
24	1399-107		2,2,2,2	SHUTTER, THROTTLE
25	1399-216		2,2,2,2	SHAFT, THROTTLE SHUTTER
26	27-20851		2,2,2,2	GASKET, INLET NEEDLE & SEAT
27	1399-593		2,2,2,2	INLET NEEDLE & SEAT
28	1399-96		,2,2,2	TUBE, BY-PASS
	1399-572		2,,,	TUBE, BY-PASS
29	24-20856		2,2,2,2	SPRING, IDLE ADJUSTMENT SCREW
-	1399-602		2,2,2,2	CARBURETOR IDLE ADJUSTMENT SCREW
30	10-23290		2,2,2,2	SCREW, IDLE ADJUSTMENT
31	20181		2,2,2,2	KNOB, IDLE ADJUSTMENT SCREW
32	17-20182		2,2,2,2	PIN, GROOVE - IDLE ADJUSTMENT SCREW
33	10-23288		2,2,2,2	SCREW, HIGH SPEED ADJUSTMENT
-	1399-95		6,6,6,6	LEAD SHOT, CHANNEL PLUG
-	1399-594		2,,,	REPAIR PARTS KIT (AJ-31A)
-	1399-601		,2,2,2	REPAIR PARTS KIT (AJ-33A)
-	1399-587		2,2,2,2	GASKET & PACKING SET

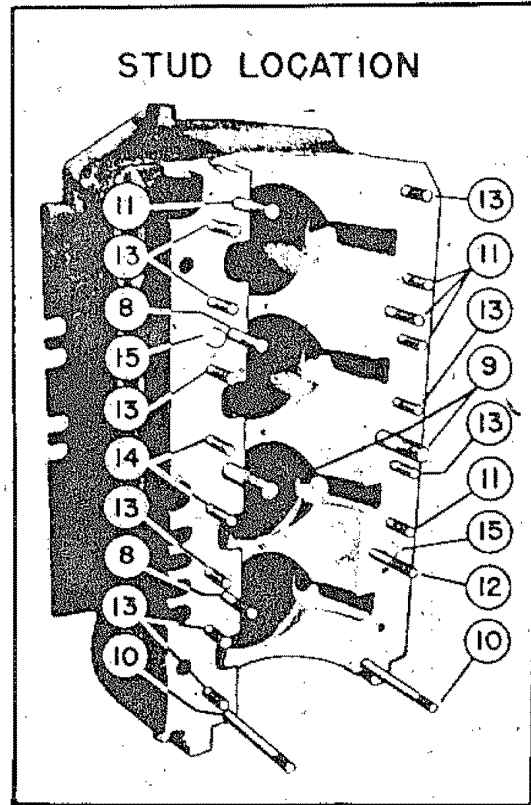
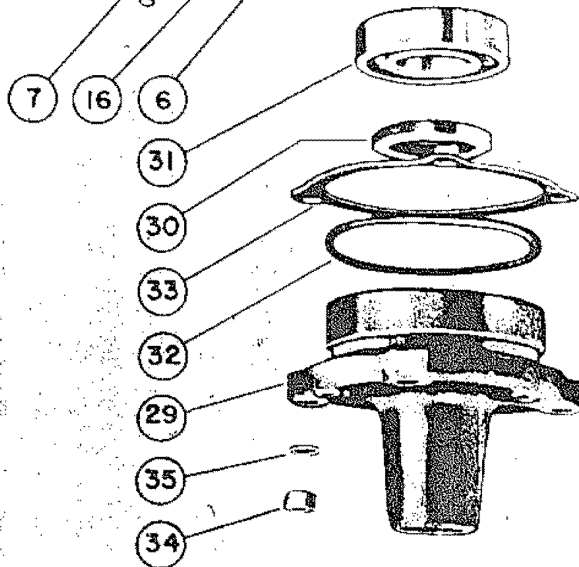
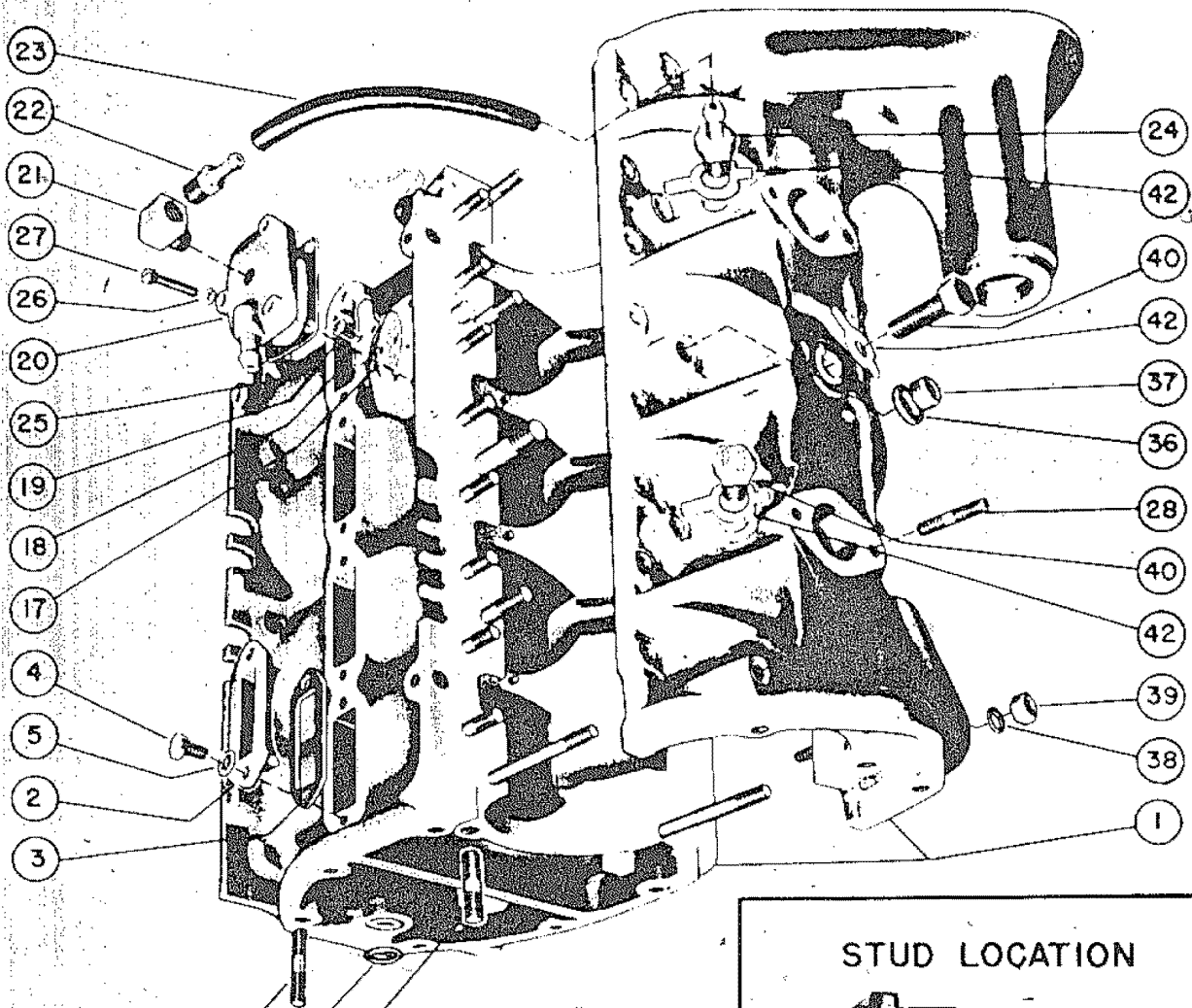
CARBURETOR LINKAGE



CARBURETOR LINKAGE

REF. NO.	PART NO.	SYM.	QTY.	DESCRIPTION
1	1316-590		2,,,	CARBURETOR ASSEMBLY, COMPLETE
	1319-596		,2,2,2	CARBURETOR ASSEMBLY, COMPLETE
2	1399-573		2,,,	SHUTTER, CHOKE
	20173		,2,2,2	SHUTTER, CHOKE
3	24-20174		2,2,2,2	SPRING, CHOKE SHUTTER
4	10-20176		2,2,2,2	SCREW, CHOKE LEVER PIVOT PIN
5	23742A1		2,2,2,2	CHOKE LEVER ASSEMBLY
6	18-20180		2,2,2,2	COTTER PIN, CHOKE LEVER RETAINING
7	20647		1,1,1,1	ROD, CHOKE
8	17-20648		2,2,2,2	PIN, CHOKE ROD TO CHOKE LEVER
9	24-20649		1,1,1,1	SPRING, CHOKE ROD POSITIONING
10	10-20650		1,1,1,1	SCREW, CHOKE ROD SPRING MOUNTING
11	12-20192		1,1,1,1	WASHER, CHOKE ROD SPRING SCREW
24	25-20116		1,1,1,1	GROMMET, CHOKE ROD
25	20663		1,1,1,1	KNOB, CHOKE ROD
12	20185A1		1,1,1,1	THROTTLE PICK-UP BRACKET ASSEMBLY
13	20188		1,1,1,1	THROTTLE PICK-UP
14	10-20189		1,1,1,1	SCREW, THROTTLE PICK-UP LOCKING
15	11-20190		1,1,1,1	NUT, THROTTLE PICK-UP SCREW
16	10-20191		1,1,1,1	SCREW, THROTTLE PICK-UP BRACKET MOUNTING
17	12-20192		1,1,1,1	WASHER, THROTTLE PICK-UP BRACKET SCREW
18	13-20193		1,1,1,1	LOCKWASHER, THROTTLE PICK-UP BRACKET SCREW
19	22-20194		,,,2	ELBOW, CARBURETOR FUEL INTAKE
-	22-24688		2,2,2,	TEE, CARBURETOR FUEL INTAKE
20	32-23492		,,,2	FUEL LINE, TEE UNION TO CARBURETOR
21	22-24693		,,,1	TEE UNION, FUEL LINE
22	22-21685		,,,2	SLEEVE, COMPRESSION NUT
23	11-21113		,,,2	NUT, COMPRESSION
-	32-23365		1,1,1,	FUEL LINE, CARBURETOR TO CARBURETOR
-	23-21309		2,2,2,	BUSHING, FUEL LINE
-	11-21310		2,2,2,	NUT, FUEL LINE

CYLINDER BLOCK AND CRANKCASE ASSEMBLY (INTAKE SIDE)



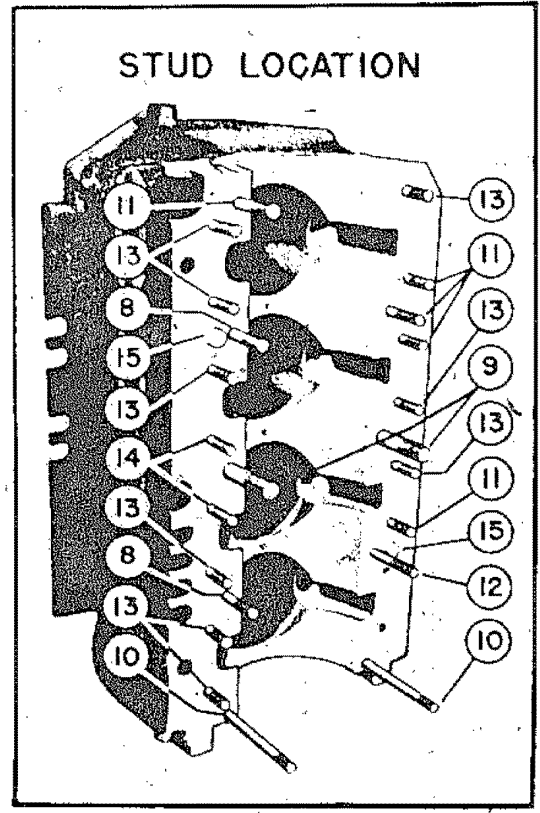
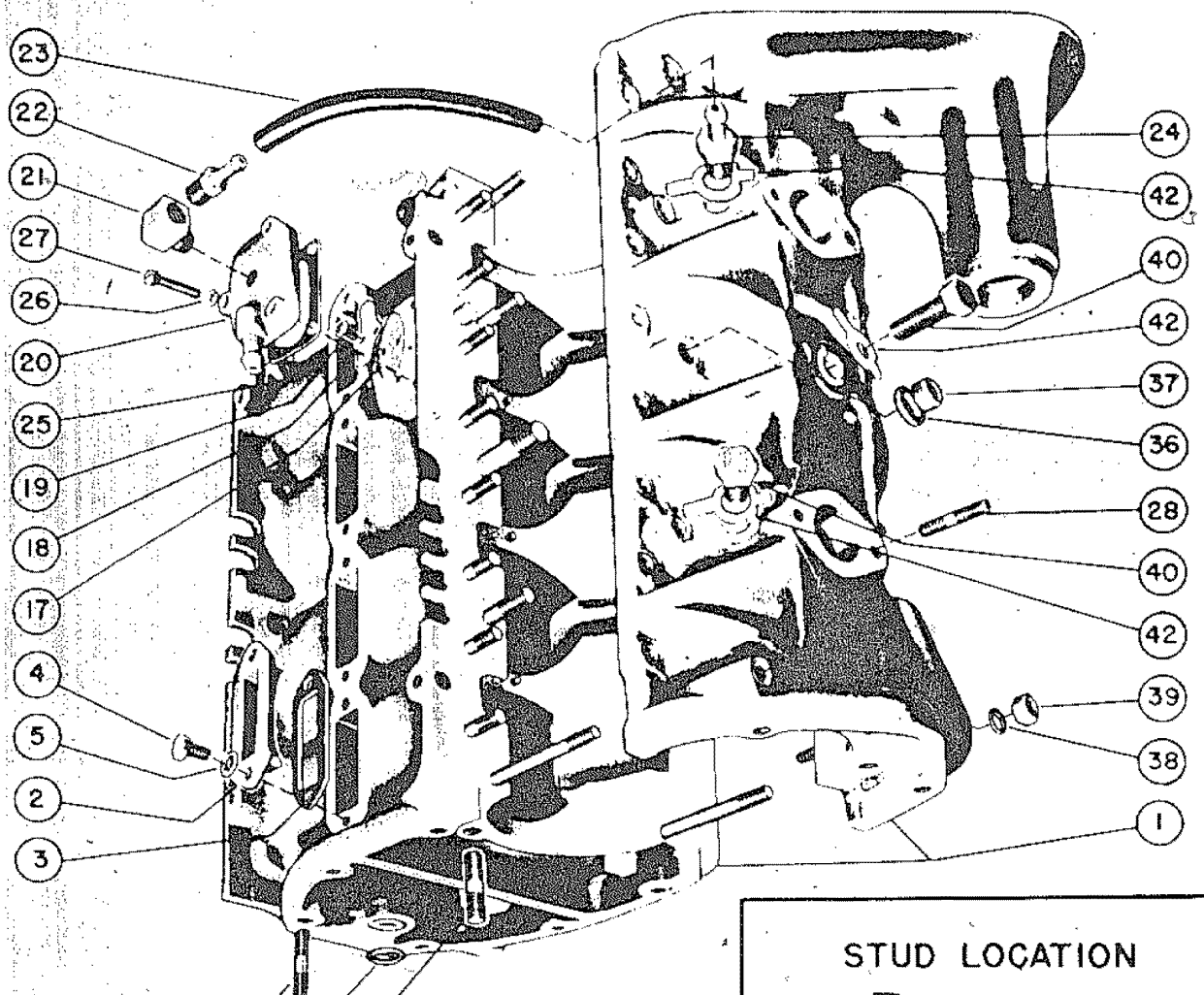
E1

CYLINDER BLOCK AND CRANKCASE ASSEMBLY (INTAKE SIDE)

REF. NO.	PART NO.	SYM.	QTY.	DESCRIPTION
1	812-833A1		1,,	CYLINDER BLOCK & CRANKCASE ASSEMBLY
	814-944A1		1,1,1,	CYLINDER BLOCK & CRANKCASE ASSEMBLY
	816-512A1		,,,1	CYLINDER BLOCK & CRANKCASE ASSEMBLY
6	16-20078		3,3,3,3	STUD, CYLINDER BLOCK & CRANKCASE TO END CAP
7	16-21015		8,8,8,8	STUD, POWERHEAD TO DRIVE SHAFT HOUSING
-	10-20784		5,,,	SCREW, CYLINDER BLOCK TO CRANKCASE
8	16-20352		3,3,,	STUD, CYLINDER BLOCK TO CRANKCASE
	16-20352		,,2,2	STUD, CYLINDER BLOCK TO CRANKCASE
9	16-20354		2,2,2,2	STUD, CYLINDER BLOCK TO CRANKCASE
36	12-20086		2,2,2,2	WASHER, CYLINDER BLOCK STUD
37	11-20087		2,2,2,2	NUT, CYLINDER BLOCK STUD
10	16-20355		2,2,2,2	STUD, CYLINDER BLOCK TO CRANKCASE
11	16-20353		1,1,,1	STUD, CYLINDER BLOCK TO CRANKCASE
	16-20353		,,5,5	STUD, CYLINDER BLOCK TO CRANKCASE
12	16-21184		1,1,1,1	STUD, CYLINDER BLOCK TO CRANKCASE
13	16-20074		12,12,,12	STUD, CYLINDER BLOCK TO CRANKCASE
	16-20074		,,9,9	STUD, CYLINDER BLOCK TO CRANKCASE
14	16-20484		,,,2	STUD, CYLINDER BLOCK TO CRANKCASE
	16-20075		2,2,2,	STUD, CYLINDER BLOCK TO CRANKCASE
15	17-20033		2,2,2,2	DOWEL PIN, CYLINDER BLOCK TO CRANKCASE
28	16-20074		4,4,4,4	STUD, CARBURETOR MOUNTING
-	16-21856		1,1,1,	STUD, FUEL PUMP MOUNTING
-	16-21832		3,3,,	STUD, STEERING HANDLE BRACKET
-	16-21864		,,3,	STUD, STEERING HANDLE BRACKET
2	20029		4,4,4,4	COVER, TRANSFER PORT
3	27-20030		4,4,4,4	GASKET, TRANSFER PORT COVER
4	10-20031		8,8,8,8	SCREW, TRANSFER PORT COVER MOUNTING
5	12-20028		8,8,8,8	WASHER, TRANSFER PORT COVER SCREW
-	23152		1,,,	PLATE, INTAKE WATER CHAMBER
-	27-23151		1,,,	GASKET, INTAKE WATER CHAMBER PLATE
-	10-20146		10,,,	SCREW, PLATE ATTACHING
-	12-20028		10,,,	WASHER, PLATE ATTACHING SCREW
16	25-20034		1,1,1,1	"O" RING, WATER INLET TUBE SEALING
17	34-20035		,,,1	REED, FUEL PRESSURE VALVE
18	34-20036		,,,1	STOP, FUEL PRESSURE VALVE REED
19	10-20037		,,,2	SCREW, FUEL PRESSURE VALVE REED STOP
-	20038		,,,1	COVER, PRESSURE VALVE
20	23113		0	COVER, PRESSURE VALVE (MARK 40H ONLY)
21	22-24689		0	ELBOW, VALVE COVER TO HOSE CONNECTOR (MARK 40H ONLY)
22	23114		0	CONNECTOR, HOSE - CHECK VALVE (MARK 40H ONLY)
23	32-23115		0	HOSE, PRESSURE RELIEF (MARK 40H ONLY)
24	10-23110		0	SCREW, BEARING LOCKING AND HOSE CONNECTOR (MARK 40H ONLY)

CONTINUED ON NEXT PAGE ➡

CYLINDER BLOCK AND CRANKCASE ASSEMBLY (INTAKE SIDE)

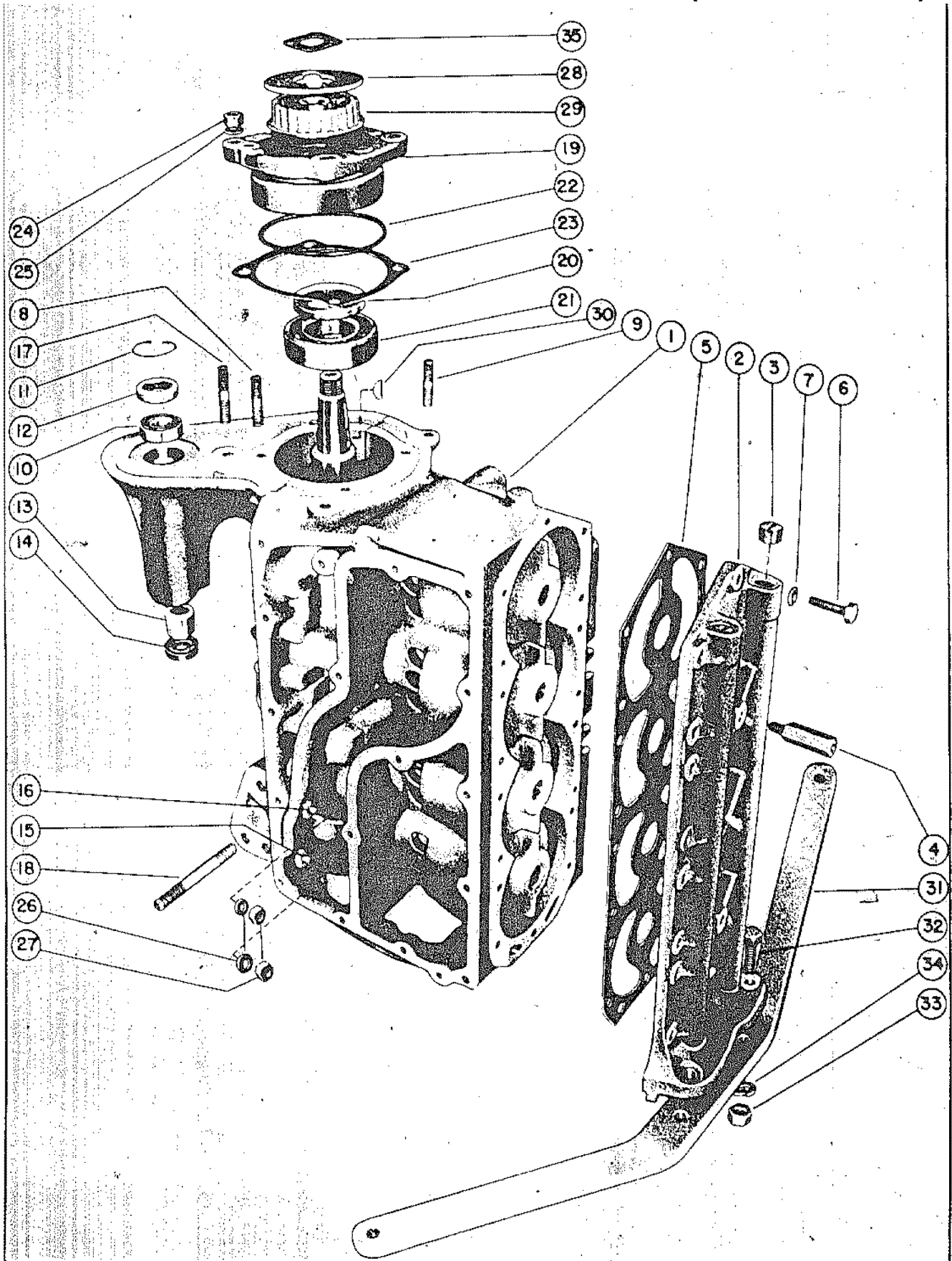


E1

CYLINDER BLOCK AND CRANKCASE ASSEMBLY (INTAKE SIDE)

REF. NO.	PART NO.	SYM.	QTY.	DESCRIPTION
25	27-20039		,,,1	GASKET, PRESSURE VALVE COVER
26	13-20040		,,,3	LOCKWASHER, PRESSURE VALVE COVER SCREW
27	10-20041		,,,3	SCREW, PRESSURE VALVE COVER
29	1113-277A1		1,1,1,	LOWER END CAP ASSEMBLY
	1101-18A1		,,,1	LOWER END CAP ASSEMBLY
-	1113-277		1,1,1,	END CAP, LOWER
30	26-21757		1,1,1,	OIL SEAL, LOWER END CAP
	26-25840		,,,1	OIL SEAL, LOWER END CAP
-	30-20824		2,2,2,	BEARING, BALL - LOWER END CAP
31	30-20080		,,,1	BEARING, BALL - LOWER END CAP
-	23-21827		1,1,1,	SPACER, BALL BEARING
32	25-20081		1,1,1,1	"O" RING, LOWER END CAP
33	15-20085		AR,AR,AR,A	SHIM, END CAP TO CRANKCASE
34	11-20083		3,3,3,3	NUT, END CAP MOUNTING STUD
35	12-20084		3,3,3,3	WASHER, END CAP MOUNTING STUD
38	12-20028		23,23,23,2	WASHER, CRANKCASE STUD
	12-20028		,,,21	WASHER, CRANKCASE STUD
39	11-20088		23,23,23,2	NUT, CRANKCASE STUD
	11-20088		,,,21	NUT, CRANKCASE STUD
40	10-20089		2,2,2,2	SCREW, MAIN BEARING LOCKING
41	10-20090		1,1,1,1	SCREW, CENTER MAIN BEARING LOCKING
42	14-20091		3,3,3,3	TAB WASHER, MAIN BEARING LOCKING SCREWS
-	17-23153		3,3,,3	DOWEL PIN, MAIN BEARING LOCATING
-	17-20032		,,3,3	DOWEL PIN, MAIN BEARING LOCATING

CYLINDER BLOCK AND CRANKCASE ASSEMBLY (EXHAUST SIDE)

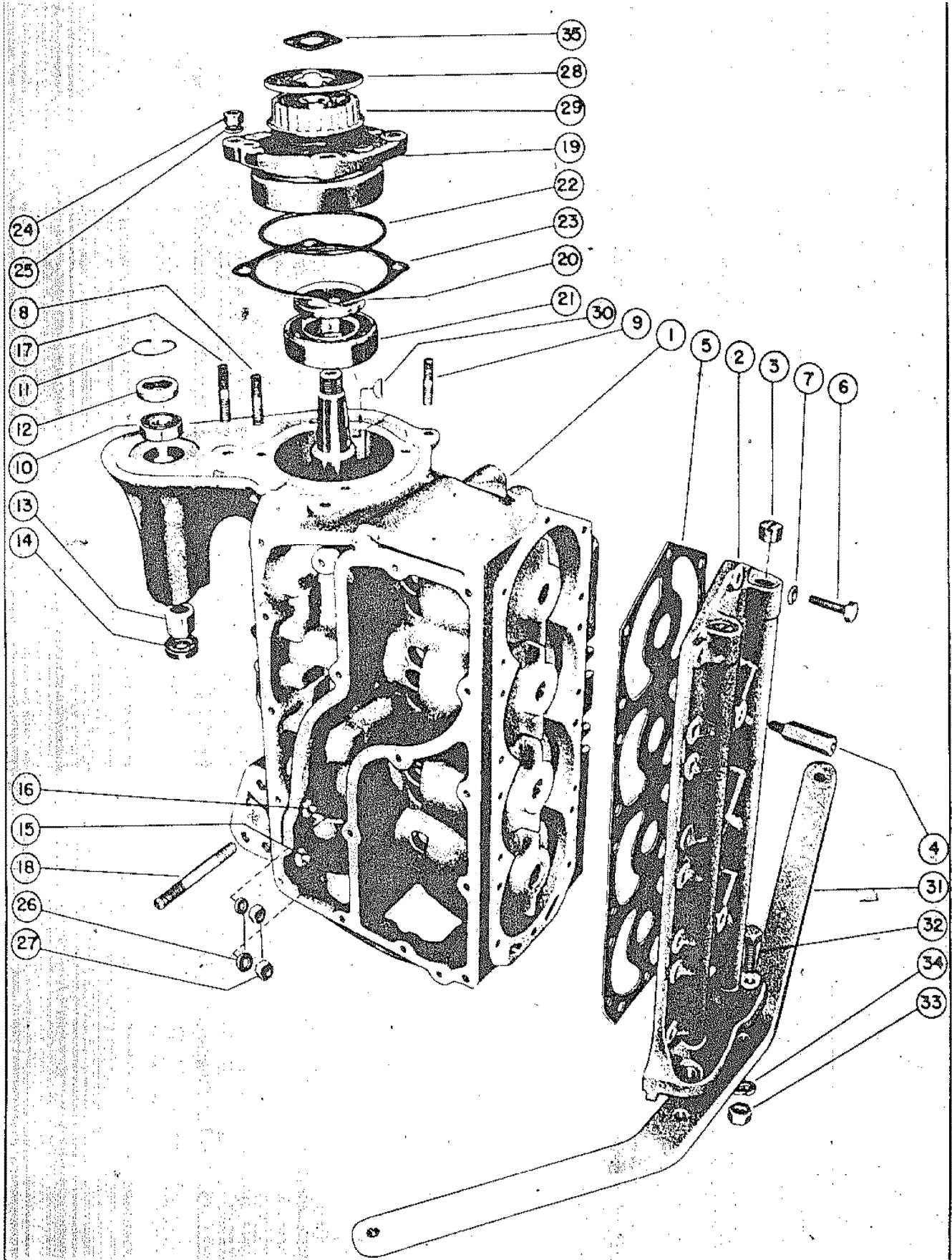


CYLINDER BLOCK AND CRANKCASE ASSEMBLY (EXHAUST SIDE)

REF. NO.	PART NO.	SYM.	QTY.	DESCRIPTION
1	812-833A1		1,,	CYLINDER BLOCK & CRANKCASE ASSEMBLY
	814-944A1'		1,1,1,	CYLINDER BLOCK & CRANKCASE ASSEMBLY
	916-512A1		,,,1	CYLINDER BLOCK & CRANKCASE ASSEMBLY
8	16-20078		2,2,2,	STUB, CRANKCASE TO UPPER END CAP
	16-20078		,,,4	STUB, CRANKCASE TO UPPER END CAP
9	16-21831		,,,2	STUD, CYLINDER BLOCK TO TIMING CASE COVER
10	30-21830		1,1,1,	BEARING, BALL-MAGNETO SHAFT
	30-20066		,,,1	BEARING, BALL-MAGNETO SHAFT
11	53-20067		1,1,1,1	SNAP RING, NAGNETO SHAFT BEARING
12	26-20068		,,,1	3OIL SEAL,MAGNETO SHAFT BEARING
13	31-20069		1,1,1,1	BEARING, ROLLER-MAGNETO SHAFT LOWER
14	26-20070		1,1,1,1	OIL SEAL, MAGNETO ROLLER BEARING
-	30-21833		1,1,1,	BEARING, BALL-MAGNETO IDLER GEAR
15	16-20075		1,1,1,1	STUD, CRANKCASE TO CYLINDER BLOCK
16	16-20076		1,1,1,1	STUD, CRANKCASE TO CYLINDER BLOCK
17	16-20077		,,,1	STUD, CRANKCASE TO TIMING CASE COVER
18	16-23107		,,,3	STUD INSTRUMENT PANEL BRACKET MOUNTING
-	91-20065		4,4,4,4	INSERT, HELICOIL-SPARK PLUG ROLE
2	1007-508A1		1,1,1,1	CYLINDER BLOCK COVER ASSEMBLY
3	22-20025		4,4,4,4	PLUG, PIPE-CYLINDER BLOCK COVER
-	23164		1,1,1,	STANDPIPE, CYLINDER BLOCK
4	16-23155		2,2,2,2	STUD, SHOULDER-SPARK PLUG COVER MOUNTING
5	27-20026		1,1,1,1	GASKET, CYNLINDER BLOCK COVER
6	10-20027		18,18,18,1	SCREW, CYLINDER BLOCK COVER MOUNTING
7	12-20028		18,18,18,1	WASHER, CYLINDER BLOCK COVER MOUNTING SCREW
19	1112-276A1		1,1,1,	UPPER END CAP ASSEMBLY
	1100-17A1		,,,1	UPPER END CAP ASSEMBLY
-	1112-276		1,1,1,	END CAP, UPPER
20	26-21740		1,1,1,	OIL SEAL, UPPER END CAP
	26-25837		,,,1	OIL SEAL, UPPER END CAP
21	30-21741		2,2,2,	BEARING, BALL-UPPER END CAP
	30-20080		,,,1	BEARING, BALL-UPPER END CAP
-	23-21742		1,1,1,	SPACER, BALL BEARING
22	25-20081		1,1,1,1	"O" RING, UPPER END CAP
23	15-21756		AR,AR,AR,	SHIM, UPPER END CAP TO CRANKCASE
	15-20082		,,,AR	SHIM, UPPER END CAP TO CRANKCASE
-	10-24786		2,2,2,	SCREW, ,END CAP TO CRANKCASE
24	11-20083		2,2,2,	NUT, END CAP MOUNTING STUD
	11-20083		,,,4	NUT, END CAP MOUNTING STUD
25	12-20084		2,2,2,	WASHER, END CAP MOUNTING STUD
	12-20084		,,,4	WASHER, END CAP MOUNTING STUD
26	12-20028		,,,2	WASHER, CRANKCASE TO CYLINDER BLOCK STUD
27	11-20088		,,,2	NUT, CRANKCASE TO CYLINDER BLOCK STUD

CONTINUED ON NEXT PAGE ➡

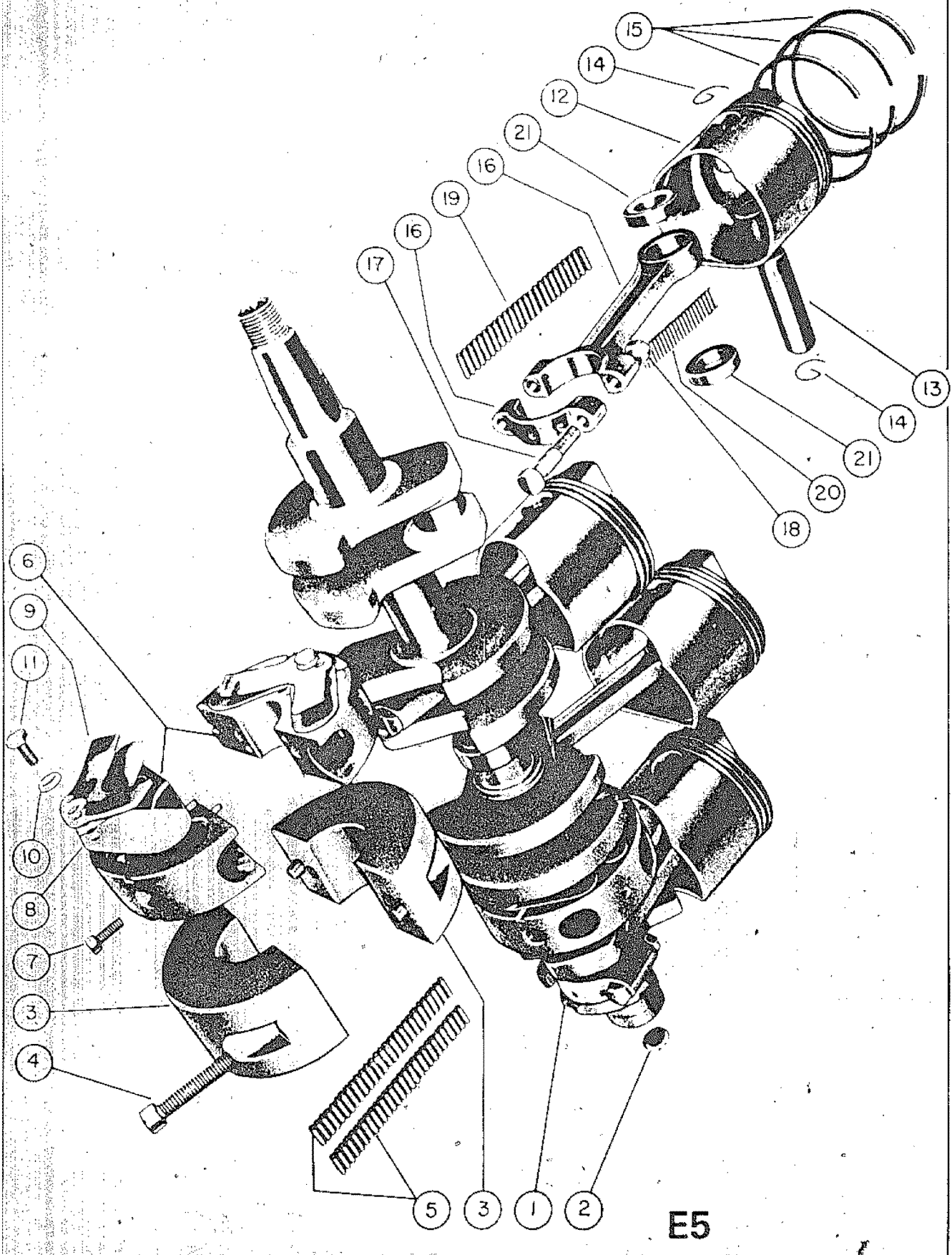
CYLINDER BLOCK AND CRANKCASE ASSEMBLY (EXHAUST SIDE)



CYLINDER BLOCK AND CRANKCASE ASSEMBLY (EXHAUST SIDE)

REF. NO.	PART NO.	SYM.	QTY.	DESCRIPTION
28	20092		,,,1	FLANGE, TIMING PULLEY
29	23108		,,,1	PULLEY, TIMING
30	28-20094		,,,1	KEY, PULLEY DRIVING
31	23990A1		1,1,1,1	STEERING ARM ASSEMBLY
32	10-20639		2,2,2,2	SCREW, STEERING ARM MOUNTING
33	11-20640		2,2,2,2	NUT , STEERING ARM MOUNTING SCREW
34	13-20223		2,2,2,2	LOCKWASHER, STEERING ARM MOUNTING SCREW
35	13-24674		,,,1	WAVE WASHER, TIMING PULLEY END PLAY

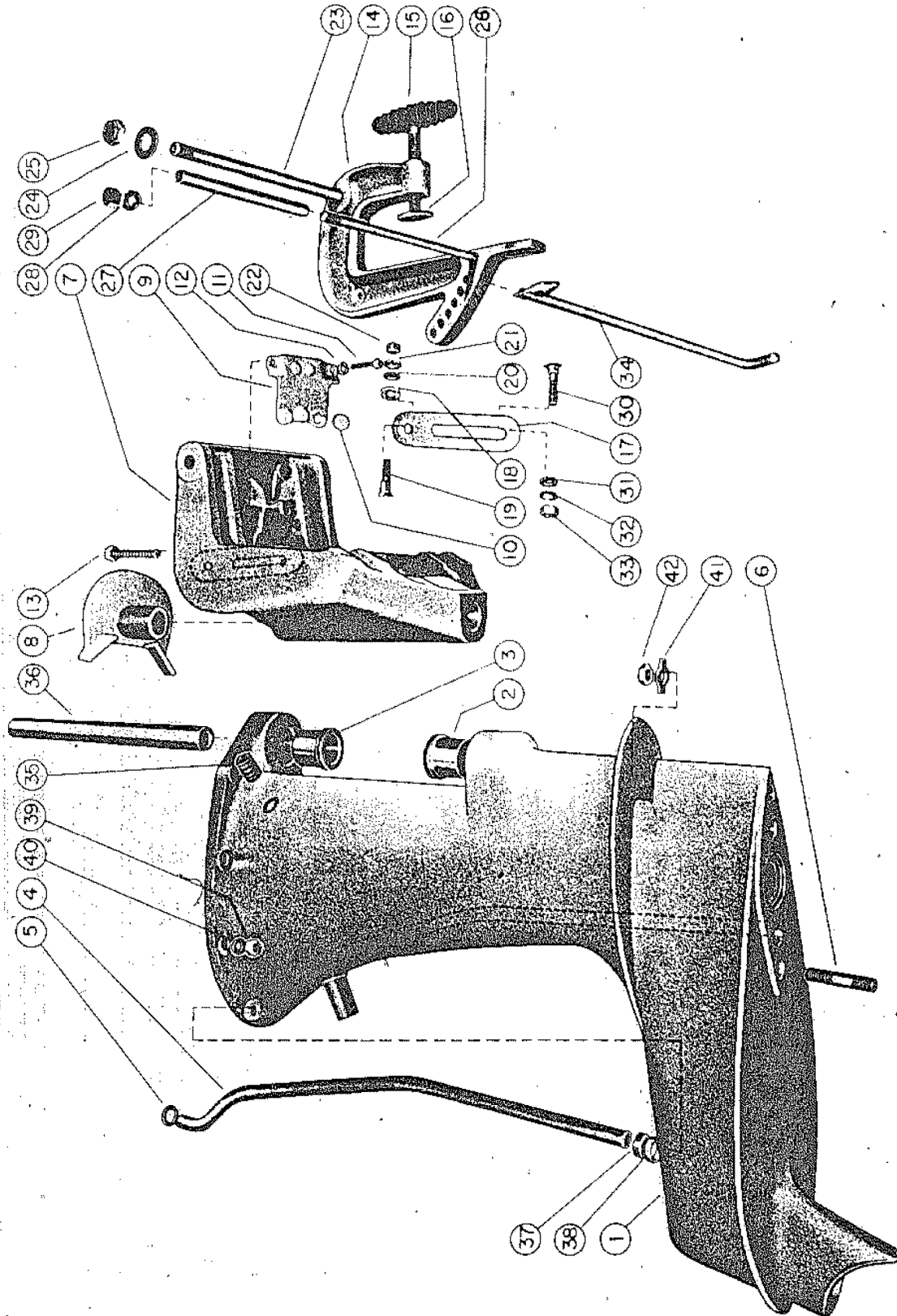
CRANKSHAFT, PISTON AND CONNECTING ROD



CRANKSHAFT, PISTON AND CONNECTING ROD

REF. NO.	PART NO.	SYM.	QTY.	DESCRIPTION
1	400-274		1,1,1,1	CRANKSHAFT
	400-482		,,,1	CRANKSHAFT
2	20043		1,1,1,1	OILER, FELT-DRIVE SHAFT SPLINE
3	514-485A1		1,1,1,1	CENTER MAIN BEARING ASSEMBLY
-	17-20323		2,2,2,2	DOWEL PIN, CENTER MAIN BEARING
4	10-24785		2,2,2,2	SCREW, CENTER MAIN BEARING CLAMPING
5	29-20046		56,56,56,5	BEARING, NEEDLE
6	501-53		2,2,2,2	MAIN BEARING ASSEMBLY (VALVE TYPE)
-	17-20392		4,4,4,4	DOWEL PIN, MAIN BEARING
7	10-20049		4,4,4,4	SCREW, MAIN BEARING CLAMPING
-	17-20050		16,16,16,1	DOWEL PIN , MAIN BEARING REED LOCATING
8	34-20888		2,2,2,2	REED SET, MAIN BEARING VALVE
-	N.S.S.		8,8,8,8	REED, LEFT (.012)
-	N.S.S.		8,8,8,8	REED, RIGHT (.012)
9	34-20053		8,8,8,8	REED STOP, M,AIN BEARING REED VALVE
10	12-26014		8,8,8,8	WASHER, REED STOP MOUNTING SCREW
11	10-20055		8,8,8,8	SCREW, REED STOP MOUNTING
-	718-1193A2		4,4,4,4	PISTON, PISTON PIN & RING ASSEMBLY
12	N.S.S.		4,4,4,4	PISTON
13	N.S.S.		4,4,4,4	PISTON PIN
14	40-20057		8,8,8,8	LOCK RING, PISTON PIN
15	39-20058		12,12,12,1	RING, PISTON
16	600-7A1		4,4,4,4	CONNECTING ROD & CAP ASSEMBLY
17	10-20060		8,8,8,8	SCREW, CONNECTING ROD
18	11-20061		8,8,8,8	NUT, CONNECTING ROD
19	29-20046		100,100,10	BEARINGM NEEDLE-CRANKPIN
20	29-20063		88,88,88,8	BEARING, NEEDLE-PISTON PIN
21	12-20064		8,8,8,8	WASHER, NEEDLE LOCATING
-	714-497A1		4,4,4,4	PISTON & PISTON PIN ASSEMBLY (.015 OVERSIZED)
-	39-20992		12,12,12,1	RINGS, PISTON (.015 OVERSIZED)

DRIVE SHAFT HOUSING-CLAMP AND SWIVEL BRACKET

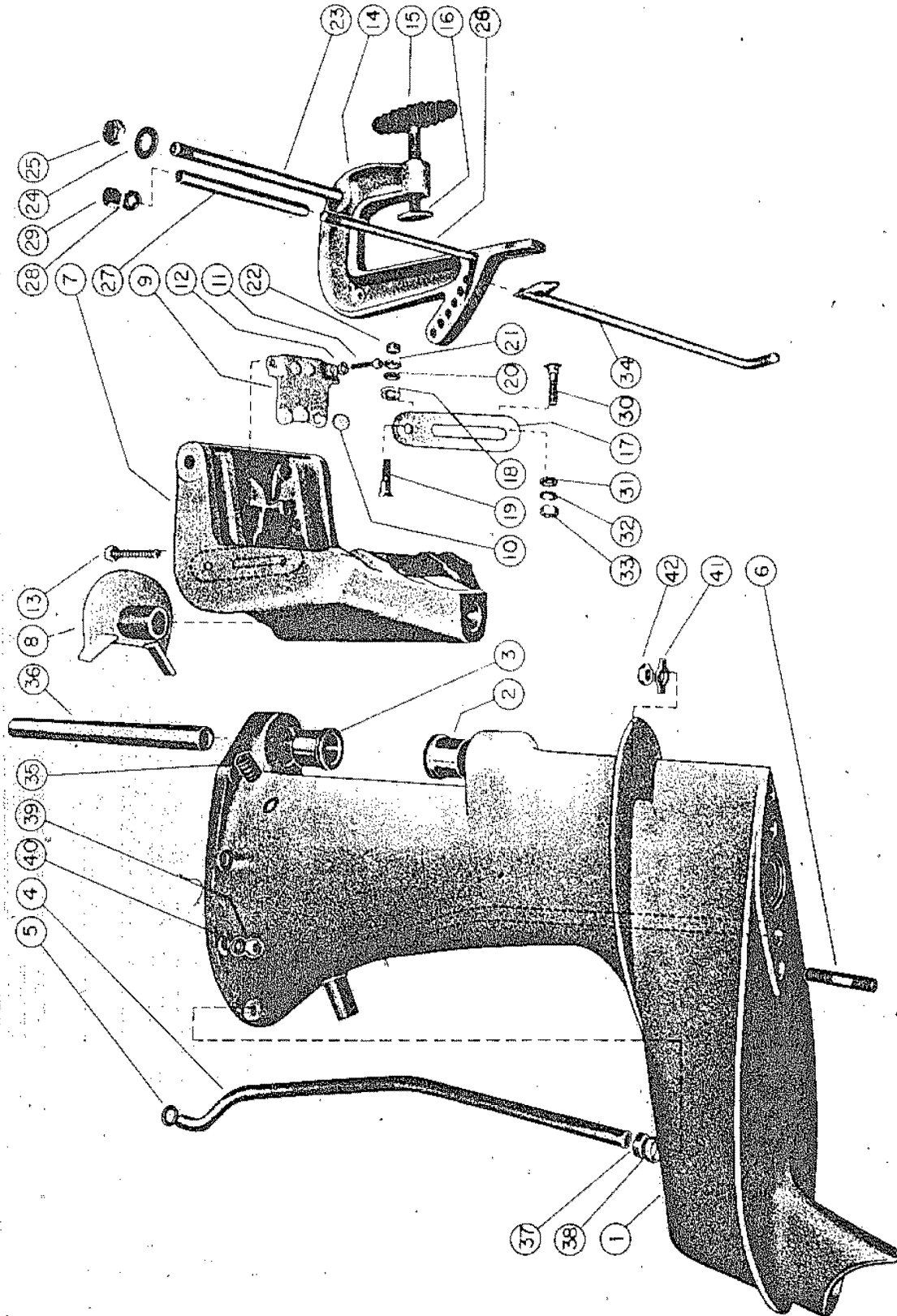


DRIVE SHAFT HOUSING-CLAMP AND SWIVEL BRACKET

REF. NO.	PART NO.	SYM.	QTY.	DESCRIPTION
1	1519-788A1		1,1,1,1	DRIVE SHAFT HOUSING ASSEMBLY
2	23-20196		1,1,1,1	BUSHING, SWIVEL PIN-LOWER
3	23-20199		1,1,1,1	BUSHING, SWIVEL PIN-UPPER
4	32-24345		1,1,1,1	TUBE, WATER INLET
5	25-20195		1,1,1,1	"O"RING, WATER INLET TUBE
6	16-24343		1,1,1,1	STUD, DRIVE SHAFT HOUSING TO GEAR HOUSING
-	1423-794		1,1,,	SWIVEL BRACKET
7	1412-697		,,1,1	SWIVEL BRACKET
-	20203		3,3,3,3	DISC, FRICTION-SWIVEL BRACKET
8	20204		1,1,1,1	DISC,CO-PILOT
9	24369A1		1,1,1,1	CLAMP PLATE ASSEMBLY
10	20203		3,3,3,3	DISC, FRICTION-CLAMP PLATE
11	10-20474		2,2,2,2	SCREW, CLAMP PLATE MOUNTING
12	13-20147		2,2,2,2	LOCKWASHER, CLAMP PLATE MOUNTING SCREW
13	10-21962		1,1,1,1	SCREW, CO-PILOT TENSION ADJUSTING
-	1426-797A1		1,1,1,1	CLAMP BRACKET ASSEMBLY
14	1400-859A1		,,2,	CLAMP BRACKET ASSEMBLY
	1400-150A1		,,,2	CLAMP BRACKET ASSEMBLY
15	24407		2,2,,	THUMB SCREW ASSEMBLY
	22477		,,2,2	THUMB SCREW ASSEMBLY
16	12-20214		2,2,2,2	WASHER, THUMB SCREW
17	20215		,,2,2	LEVER, TILT STOP
18	23-20216		,,2,2	SPACER, TILT STOP LEVER
19	10-20217		,,2,2	SCREW, TILT STOP LEVER ANCHOR
20	12-20028		,,2,2	WASHER, LEVER ANCHOR SCREW
21	13-20924		,,2,2	LOCKWASHER, LEVER ANCHOR SCREW
22	11-20088		,,2,2	NUT, LEVER ANCHOR SCREW
23	16-20218		,,1,1	STUD, CLAMP BRACKET TO SWIVEL BRACKET
-	10-21091		2,2,,	SCREW, CLAMP BRACKET TO CLAMP BRACKET-UPPER
-	10-24217		1,1,,	SCREW, CLAMP BRACKET TO CLAMP BRACKET-LOWER
-	15-24370		2,2,,	SHIM, CLAMP BRACKET TO SWIVEL BRACKET
24	15-20219		,,2,2	SHIM, CLAMP BRACKET TO SWIVEL BRACKET
25	11-20220		,,2,2	NUT, CLAMP BRACKET TO SWIVEL BRACKET STUD
-	13-20147		2,2,,	LOCKWASHER, UPPER CLAMP BRACKET SCREW
-	11-20088		2,2,,	NUT, UPPER CLAMP BRACKET SCREW
-	13-20758		1,1,,	LOCKWASHER, LOWER CLAMP BRACKET SCREW
-	11-20101		1,1,,	NUT, LOWER CLAMP BRACKET SCREW
-	16-24379A1		1,1,,	TILT LOCK STUD ASSEMBLY
-	16-20221A1		,,1,1	TILT LOCK STUD ASSEMBLY
-	16-24379		1,1,,	STUD, SWIVEL BRACKET SUPPORT
26	16-20221		,,1,1	STUD, CLAMP BRACKET
-	11-21528		2,2,,	NUT, SWIVEL BRACKET SUPPORT STUD
27	23-20222		,,1,1	SPACER, CLAMP BRACKET STUD

CONTINUED ON NEXT PAGE ➡

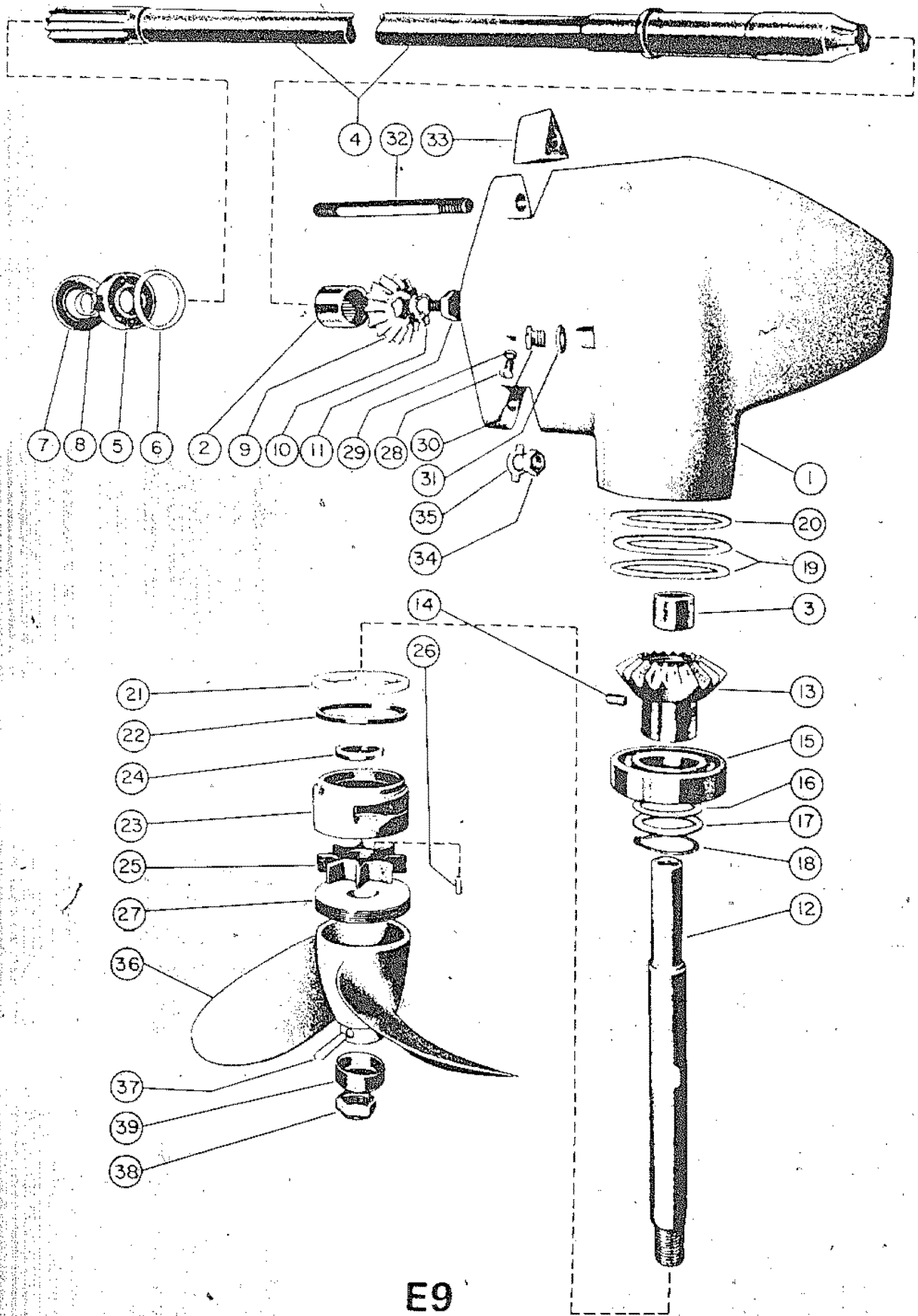
DRIVE SHAFT HOUSING-CLAMP AND SWIVEL BRACKET



DRIVE SHAFT HOUSING-CLAMP AND SWIVEL BRACKET

REF. NO.	PART NO.	SYM.	QTY.	DESCRIPTION
-	12-20084		2,2,,	WASHER, SSWIVEL BRACKET SUPPORT STUD
28	13-20223		,,2,2	LOCKWASHER, CLAMP BRACKET STUD
29	11-20083		,,2,2	NUT, CLAMP BRACKET STUD
30	10-20224		,,2,2	SCREW, TILT STOP LEVER RETAINING
31	12-20028		,,2,2	WASHER, TILT STOP LVERE RETAINING SCREW
32	13-20924		,,2,2	LOCKWASHER, TILT STOP LEVER RETAINING SCREW
33	11-20088		,,2,2	NUT, TIOLT STOP LEVER RETAINING SCREW
34	17-23991		1,1,,	PIN, TILT LOCK
	17-20225		,,1,1	PIN, TILT LOCK
35	24-20229		2,2,2,2	SPRING, CO-PILOT
36	17-20230		1,1,1,1	PIN, SWIVEL
-	24344		1,1,,	JET, EXHAUST
37	12-20684		1,1,1,1	WASHER,, RUBBER-WATER TUBE SEALING
38	12-21904		1,1,1,1	WASHER, WATER TUBE
39	11-20083		8,8,8,8	NUT, POWERHEAD TO DRIVE SHAFT HOUSING STUD
40	12-20084		8,8,8,8	WASHER, POWERHEAD TO DRIVE SHAFT HOUSING STUD
41	14-20306		1,1,1,1	TAB WASHER, DRIVE SHAFT HOUSING TO GEAR HOUSING STUD
42	11-20101		1,1,1,1	NUT, DRIVE SHAFT HOUSING TO GEAR HOUSING STUD

GEAR HOUSING-DRIVE SHAFT AND PROPELLER



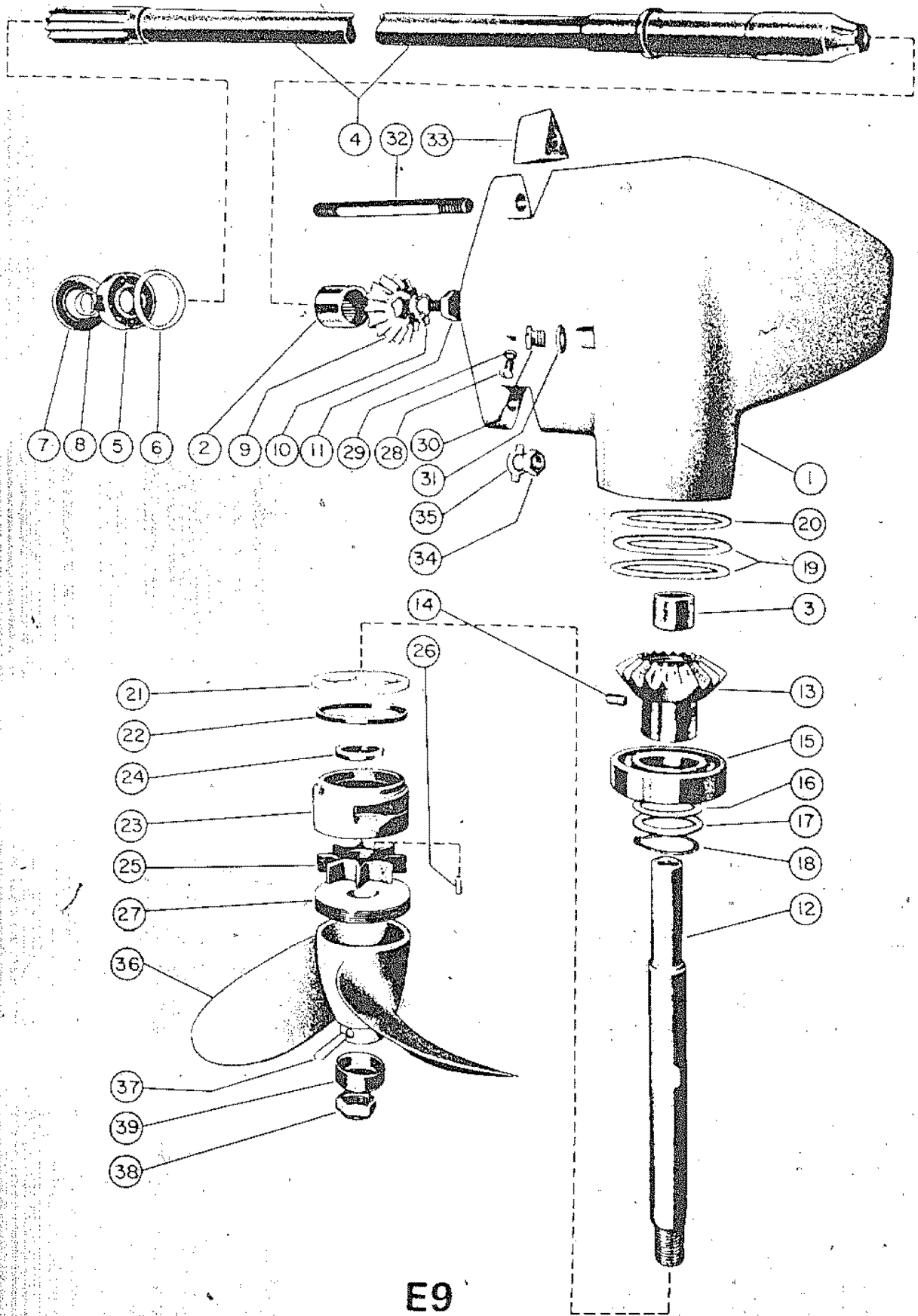
E9

GEAR HOUSING-DRIVE SHAFT AND PROPELLER

REF. NO.	PART NO.	SYM.	QTY.	DESCRIPTION
-	1610-805A2		1,1,1,1	GEAR HOUSING ASSEMBLY, COMPLETE
1	1610-805A1		1,1,1,1	GEAR HOUSING ASSEMBLY
2	31-24515		1,1,1,1	BEARING, ROLLER-DRIVE SHAFT
3	31-21146		1,1,1,1	BEARING, ROLLER-PROPELLER SHAFT
4	45-24516		1,1,1,1	DRIVE SHAFT
5	30-20861		1,1,1,1	BEARING, BALL-DRIVE SHAFT
6	15-20929		AR,AR,AR,A	SHIM, DRIVE SHAFT BALL BRG.(.002-3-5-10)
7	26-20465A1		1,1,1,1	PILOT & OIL SEAL ASSEMBLY
-	26-20465		1,1,1,1	OIL SEAL
8	24530		1,1,1,1	RETAINER, DRIVE SHAFT BEARING
9	43-24531		1,1,1,1	GEAR, PINION
10	14-20871		1,1,1,1	TAB WASHER, DRIVE SHAFT PINION GEAR
11	10-24218		1,1,1,1	SCREW, PINION GEAR ATTACHING
12	44-24532		1,1,1,1	SHAFT, PROPELLER
13	43-24533		1,1,1,1	GEAR, PROPELLER SHAFT
14	17-24534		1,1,1,1	PIN, PROPELLER GEAR DRIVING
15	30-20080		1,1,1,1	BEARING, BAL;L-PROPELLER SHAFT
16	15-24536		AR,AR,AR,A	SHIM, PROPELLER SHAFT BEARING (.002)
	15-24537		AR,AR,AR,A	SHIMN, PROPELLER SHAFT BALL BEARING (.003)
	15-24538		AR,AR,AR,A	SHIMN, PROPELLER SHAFT BALL BEARING (.005)
	15-24539		AR,AR,AR,A	SHIMN, PROPELLER SHAFT BALL BEARING (.010)
17	12-24540		1,1,1,1	THRUST WASHER, PROPELLER SHAFT
18	53-24541		1,1,1,1	SNAP RING, PROPELLER SHAFT
19	15-24542		2,2,2,2	SHIM, PROPELLER SHAFT BEARING (.032)
20	15-24543		AR,AR,AR,A	SHIM, PROPELLER SHAFT BEARING (.002)
	15-24544		AR,AR,AR,A	SHIM, PROPELLER SHAFT BEARING (.003)
	15-24545		AR,AR,AR,A	SHIM, PROPELLER SHAFT BEARING (.005)
	15-24546		AR,AR,AR,A	SHIM, PROPELLER SHAFT BEARING (.010)
21	12-24548		1,1,1,1	WASHER, WATER PUMP HOUSING
22	25-24547		1,1,1,1	RING,SEALING-WATER PUMP HOUSING
23	46-24549A1		1,1,1,1	WATER PUMP HOUSING ASSEMBLY
24	26-24523		1,1,1,1	SEAL, PROPELLER SHAFT
25	47-24550		1,1,1,1	IMPELLER
26	28-20946		1,1,1,1	KEY, IMPELLER DRIVE
27	24551		1,1,1,1	COVER, WATER PUMP
28	10-28653		1,1,1,1	SCREW,M VENT-GEAR CASE
29	12-20262		1,1,1,1	WASHER,FIBRE-GEAR CASE VENT SCREW
30	10-28634		1,1,1,1	SCREW, GREASE FILLER HOLE
31	12-20260		1,1,1,1	WASHER, FIBRE-GREASE FILLER HOLE
32	16-24553		1,1,1,1	STUD, DRIVE SHAFT HOUSING TO GEAR HOUSING
33	11-24554		1,1,1,1	NUT, GEAR HOUSING STUD
34	11-20101		1,1,1,1	NUT, DIVE SHAFT HOUSING STUD

CONTINUED ON NEXT PAGE ➡

GEAR HOUSING-DRIVE SHAFT AND PROPELLER



E9

GEAR HOUSING-DRIVE SHAFT AND PROPELLER

REF. NO.	PART NO.	SYM.	QTY.	DESCRIPTION
35	14-20306		1,1,1,1	TAB WASHER, DRIVE SHAFT HOUSING STUD
36	48-24566		1,1,1,1	PROPELLER
37	17-24567		1,1,1,1	SHEAR PIN
38	11-22339		1,1,1,1	NUT, PROPELLER
39	23-24568		1,1,1,1	COLLAR, PROPELLER

PARTS INDEX

Part Number	Description	Pg.	Ref. No.	Part Number	Description	Pg.	Ref. No.
20029	COVER, TRANSFER PORT	29	2	21264	CLIP, HIGH TENSION LEAD	13	-
20038	COVER, PRESSURE VALVE	29	--	21635	COVER, TRIM - STARTER		
20043	OILER, FELT-DRIVE SHAFT				COVER	3	18
	SPLINE	37	2	21834	HOUSING, TACHOMETER		
20073A2	EXHAUST MANIFOLD				DRIVE SHAFT	11	-
	COVER ASSEMBLY	7	4	21834A1	TACHOMETER DRIVE		
20092	FLANGE, TIMING PULLEY	35	28		SHAFT HOUSING		
20096	PLATE, EXHAUST				ASSEMBLY	11	-
	MANIFOLD	7	2	21839	CAP, TACHOMETER DRIVE	11	-
20114A2	HIGH TENSION LEAD			21841	SHAFT, CAM	13	-
	ASSEMBLY (NO. 1 & 4			21841A1	CAM SHAFT ASSEMBLY	13	-
	CYLINDERS)	13	20	21845	COVER, GEAR CASE	9	-
20119	PROTECTOR, SPARK PLUG	13	22	21845A1	GEAR CASE COVER		
20120	CAP, RUBBER - HIGH				ASSEMBLY	9	-
	TENSION LEAD	13	23	21855	FITTING, GREASE	9	-
20121	TERMINAL, HIGH TENSION			21861	SHAFT, CAM	13	-
	LEAD	13	-	21861A1	CAM SHAFT ASSEMBLY	13	-
20122A2	HIGH TENSION LEAD			21862	COVER, GEAR CASE	9	-
	ASSEMBLY (NO. 2 & 3			21862A1	GEAR CASE COVER		
	CYLINDERS)	13	20		ASSEMBLY	9	-
20129	LOCK WIRE, MAGNETO			22477	THUMB SCREW ASSEMBLY	39	15
	ACTUATING BRACKET			22555	LOCK WIRE, COIL BRIDGE		
	SCREW	11	4		SCREW	15	-
20131A1	CARBURETOR ACTUATING			23088A1	TACHOMETER DRIVE		
	BRACKET ASSEMBLY	11	6		SHAFT & PIN ASSEMBLY	11	-
20136	FLANGE, DRIVEN PULLEY	11	14	23096	COVER, GEAR CASE (USED		
20140	BELT, TIMING	11	19		ONLY WITH REWIND		
20144	PLATE, AUXILIARY				STARTER)	9	-
	STARTING	5	5	23096A1	GEAR CASE COVER		
20145	PLATE, FLYWHEEL NUT				ASSEMBLY (USED ONLY		
	LOCKING	5	6		WITH REWIND STARTER)	9	-
20155	RETAINER, REWIND SPRING	3	3	23108	PULLEY, TIMING	35	29
20157	SHAFT, STARTER SHEAVE	3	5	23109	COVER, INTAKE SIDE	7	14
20161	PLATE, RETAINER -			23109A1	INTAKE COVER ASSEMBLY	7	-
	STARTER PAWL	3	12	23113	COVER, PRESSURE VALVE		
20161	RETAINER, WAVE WASHER	3	9		(MARK 40H ONLY)	29	20
20162	PAWL, STARTER	3	10	23114	CONNECTOR, HOSE -		
20171	HANDLE, STARTER CABLE	3	16		CHECK VALVE (MARK 40H		
20172	END CAP, STARTER CABLE				ONLY)	29	22
	HANDLE	3	17	23146	COVER, EXHAUST		
20173	SHUTTER, CHOKE	27	2		MANIFOLD	7	-
20181	KNOB, IDLE ADJUSTMENT			23147	PLATE, EXHAUST		
	SCREW	25	31		MANIFOLD	7	2
20185A1	THROTTLE PICK-UP			23152	PLATE, INTAKE WATER		
	BRACKET ASSEMBLY	27	12		CHAMBER	29	--
20188	THROTTLE PICK-UP	27	13	23156	COVER, INTAKE SIDE	7	14
20203	DISC, FRICTION-CLAMP			23156A1	INTAKE COVER ASSEMBLY	7	-
	PLATE	39	10	23157	SPARK PLUG COVER		
20203	DISC, FRICTION-SWIVEL				ASSEMBLY	7	11
	BRACKET	39	-	23164	STANDPIPE, CYLINDER		
20204	DISC, CO-PILOT	39	8		BLOCK	33	-
20215	LEVER, TILT STOP	39	17	23165	COVER, EXHAUST		
20493	BRACKET, FUEL FILTER	19	1		MANIFOLD USED ONLY		
20495	TOP, FUEL FILTER	19	4		WITH REWIND STARTER	7	-
20497	BOWL, FUEL FILTER	19	7	23165A1	EXHAUST MANIFOLD		
20498	BALE ASSEMBLY	19	8		COVER ASSEMBLY USED		
20499	PLATE, FILTER ELEMENT				ONLY WITH REWIND		
	GASKET BACKING	19	11		STARTER	7	-
20647	ROD, CHOKE	27	7	23355	FUEL PUMP ASSEMBLY	23	1
20663	KNOB, CHOKE ROD	27	25	23357	BOWL, FUEL FILTER	19	-

PARTS INDEX

Part Number	Description	Pg.	Ref. No.	Part Number	Description	Pg.	Ref. No.
23357A1	FUEL FILTER ASSEMBLY . . .	19	-	10-20041	SCREW, PRESSURE VALVE COVER	31	27
23358	TOP, FUEL FILTER	19	-	10-20049	SCREW, MAIN BEARING CLAMPING	37	7
23361	END CAP, FILTER ELEMENT	19	-	10-20055	SCREW, REED STOP MOUNTING	37	11
23363	BRACKET, FUEL FILTER . . .	19	-	10-20060	SCREW, CONNECTING ROD	37	17
23390	DIAPHRAGM ASSEMBLY . . .	23	12	10-20089	SCREW, MAIN BEARING LOCKING	31	40
23392	DIAPHRAGM, PULSATOR . . .	23	4	10-20090	SCREW, CENTER MAIN BEARING LOCKING	31	41
23393	BODY, FUEL PUMP	23	14	10-20098	SCREW, INTAKE COVER MOUNTING (REAR)	7	18
23394	SEAT, COVER AND OUTLET VALVE	23	2	10-20098	SCREW, MANIFOLD COVER MOUNTING	7	8
23395	ARM, ROCKER	23	18	10-20098	SCREW, STARTER COVER TO TIMING CASE	3	20
23397	LINK, ROCKER ARM	23	16	10-20130	SCREW, MAGNETO ACTUATING BRACKET . . .	11	5
23402	PLATE, COVER	23	3	10-20139	SCREW, MAGNETO PULLEY CLAMPING	11	18
23403	RETAINER, VALVE	23	10	10-20139	SCREW, MAGNETO SHAFT	11	-
23407	SEAT, ROCKER ARM SPRING	23	17	10-20146	SCREW, LOCKING PLATE TO FLYWHEEL	5	7
23410	SPRING, VALVE	23	8	10-20146	SCREW, PLATE ATTACHING	29	--
23411	VALVE	23	9	10-20176	SCREW, CHOKE LEVER PIVOT PIN	27	4
23412	PIPE PLUG	23	-	10-20189	SCREW, THROTTLE PICK-UP LOCKING	27	14
23446	BOWL, FUEL FILTER	19	-	10-20191	SCREW, THROTTLE PICK-UP BRACKET MOUNTING	27	16
23447	BALE ASSEMBLY	19	-	10-20217	SCREW, TILT STOP LEVER ANCHOR	39	19
23468	ADAPTER EXTENSION, FUEL LINE	19	-	10-20224	SCREW, TILT STOP LEVER RETAINING	41	30
23575A1	EXHAUST MANIFOLD COVER ASSEMBLY	7	4	10-20289	SCREW, STARTER COVER TO GEAR CASE COVER . . .	3	--
23646	PULLEY, DRIVEN	11	13	10-20314	SCREW, DRIVE - SERIAL PLATE	9	26
23742A1	CHOKE LEVER ASSEMBLY . . .	27	5	10-20322	SCREW, TRIM COVER TO STARTER HOUSING	3	19
23990A1	STEERING ARM ASSEMBLY	35	31	10-20474	SCREW, CLAMP PLATE MOUNTING	39	11
23994	BRACKET, MAGNETO ACTUATING	11	2	10-20474	SCREW, GEAR CASE COVER MOUNTING	9	-
24000	HIGH TENSION LEAD & CLIP	13	-	10-20482	SCREW, INTAKE COVER MOUNTING (FRONT)	7	19
24003	COVER, TIMING CASE	9	27	10-20639	SCREW, STEERING ARM MOUNTING	35	32
24113	FLUSHING DEVICE	1	-	10-20650	SCREW, CHOKE ROD SPRING MOUNTING	27	10
24344	JET, EXHAUST	41	--	10-20653	SCREW, GEAR CASE COVER MOUNTING	9	-
24369A1	CLAMP PLATE ASSEMBLY . . .	39	9	10-20784	SCREW, CYLINDER BLOCK TO CRANKCASE	29	-
24407	THUMB SCREW ASSEMBLY	39	15	10-20847	SCREW, THROTTLE STOP LEVER	25	19
24530	RETAINER, DRIVE SHAFT BEARING	43	8	10-20857	SCREW & LOCKWASHER, FLOAT BOWL COVER (LONG)	25	22
24551	COVER, WATER PUMP	43	27				
24736A3	CARRYING HANDLES	1	-				
25042	TOP, FUEL FILTER	19	-				
25120	KNOB, HIGH SPEED ADJUSTING	25	3				
N.S.S.	PISTON	37	12				
N.S.S.	PISTON PIN	37	13				
N.S.S.	REED, LEFT (.012)	37	-				
N.S.S.	REED, RIGHT (.012)	37	-				
10-20027	SCREW, CYLINDER BLOCK COVER MOUNTING	33	6				
10-20031	SCREW, AUXILIARY PLATE TO FLYWHEEL	5	-				
10-20031	SCREW, CARBURETOR ACTUATING BRACKET MOUNTING	11	7				
10-20031	SCREW, TORSION SPRING MOUNTING	11	10				
10-20031	SCREW, TRANSFER PORT COVER MOUNTING	29	4				
10-20037	SCREW, CONTACT SUPPORT	15	-				

PARTS INDEX

Part Number	Description	Pg.	Ref. No.	Part Number	Description	Pg.	Ref. No.
10-21091	SCREW, CLAMP BRACKET TO CLAMP BRACKET-UPPER	39	--	11-20061	NUT, CONNECTING ROD ..	37	18
10-21307	SCREW, CONTACT SUPPORT	15	-	11-20083	NUT, CLAMP BRACKET STUD	41	29
10-21471	SCREW & LOCKWASHER, THROTTLE SHUTTER ...	25	23	11-20083	NUT, END CAP MOUNTING STUD	33	24
10-21504	SCREW, COVER MOUNTING	7	12	11-20083	NUT, END CAP MOUNTING STUD	33	24
10-21625	SCREW, FUEL FILTER ATTACHING	19	-	11-20083	NUT, END CAP MOUNTING STUD	31	34
10-21962	SCREW, CO-PILOT TENSION ADJUSTING	39	13	11-20083	NUT, POWERHEAD TO DRIVE SHAFT HOUSING STUD	41	39
10-22445	SCREW, FRONT COWL MOUNTING	7	-	11-20083	NUT, TIMING CASE COVER MOUNTING STUD	9	29
10-22535	SCREW, CONTACT SUPPORT LOCKING	17	24	11-20087	NUT, CYLINDER BLOCK STUD	29	37
10-22537	SCREW, END CAP COVER TO END CAP	17	38	11-20088	NUT, COVER SCREW	9	-
10-22539	SCREW, END CAP TO FRAME	17	30	11-20088	NUT, CRANKCASE STUD ..	31	39
10-22540	SCREW & LOCKWASHER, BEARING SUPPORT	15	7	11-20088	NUT, CRANKCASE STUD ..	31	39
10-22540	SCREW, CONDENSER MOUNTING	15	21	11-20088	NUT, CRANKCASE TO CYLINDER BLOCK STUD .	33	27
10-22540	SCREW, CONTACT SUPPORT	17	25	11-20088	NUT, FUEL FILTER ATTACHING SCREW	19	-
10-22541	SCREW, BREAKER TERMINAL	17	26	11-20088	NUT, FUEL PUMP MOUNTING STUD	23	-
10-22546	SCREW, SET - COIL BRIDGE	15	8	11-20088	NUT, LEVER ANCHOR SCREW	39	22
10-22552	SCREW, PRIMARY GROUND	15	10	11-20088	NUT, TIOLT STOP LEVER RETAINING SCREW	41	33
10-23110	SCREW, BEARING LOCKING AND HOSE CONNECTOR (MARK 40H ONLY)	29	24	11-20101	NUT, UPPER CLAMP BRACKET SCREW	39	--
10-23274	SCREW & LOCKWASHER, FLOAT BOWL COVER (SHORT)	25	21	11-20101	NUT, DIVE SHAFT HOUSING STUD	43	34
10-23288	SCREW, HIGH SPEED ADJUSTMENT	25	33	11-20101	NUT, DRIVE SHAFT HOUSING TO GEAR HOUSING STUD	41	42
10-23290	SCREW, IDLE ADJUSTMENT	25	30	11-20101	NUT, LOWER CLAMP BRACKET SCREW	39	--
10-23404	SCREW, COVER	23	6	11-20142	NUT, FLYWHEEL	5	3
10-23405	SCREW, COVER PLATE ...	23	5	11-20166	NUT, SHEAVE SHAFT	3	14
10-23406	SCREW, VALVE RETAINER .	23	11	11-20184	NUT, CARBURETOR MOUNTING STUD	25	2
10-24004	SCREW, CONTACT SUPPORT LOCKING	15	24	11-20190	NUT, THROTTLE PICK-UP SCREW	27	15
10-24217	SCREW, CLAMP BRACKET TO CLAMP BRACKET-LOWER	39	--	11-20220	NUT, CLAMP BRACKET TO SWIVEL BRACKET STUD	39	25
10-24218	SCREW, PINION GEAR ATTACHING	43	11	11-20361	NUT, FRONT COWL MOUNTING STUD	7	23
10-24222	SCREW, FRONT COWL MOUNTING	7	-	11-20640	NUT , STEERING ARM MOUNTING SCREW	35	33
10-24223	SET SCREW, HIGH SPEED ADJUSTING KNOB	25	4	11-20849	NUT, MAIN ADJUSTMENT SCREW PACKING	25	17
10-24785	SCREW, CENTER MAIN BEARING CLAMPING	37	4	11-20890	NUT, EXHAUST MANIFOLD COVER STUD	7	7
10-24786	SCREW, ,END CAP TO CRANKCASE	33	--	11-20890	NUT, INTAKE COVER STUD	7	16
10-28634	SCREW, GREASE FILLER HOLE	43	30	11-21113	NUT, COMPRESSION	27	23
				11-21113	NUT, COMPRESSION - FUEL LINE	21	15
				11-21310	NUT, FUEL LINE	27	-

PARTS INDEX

Part Number	Description	Pg.	Ref. No.	Part Number	Description	Pg.	Ref. No.
11-21848	NUT, FLYWHEEL	5	-	12-20086	WASHER, CYLINDER BLOCK		
11-21929	NUT, JAM - TACHOMETER				STUD	29	36
	DRIVE SHAFT	11	-	12-20128	WASHER, MAGNETO		
11-22339	NUT, PROPELLER	45	38		ACTUATING BRACKET		
11-22553	NUT, GROUND SCREW	15	16		SCREW	11	3
11-23443	NUT, FUEL FILTER TOP	19	2	12-20138	WASHER, MAGNETO		
11-24554	NUT, GEAR HOUSING STUD	43	33		PULLEY CLAMPING		
11-24650	NUT, MANIFOLD COVER				SCREW	11	16
	MOUNTING STUD	7	--	12-20138	WASHER, MAGNETO SHAFT		
12-20028	WASHER, CARBURETOR				SCREW	11	-
	ACTUATING BRACKET			12-20143	WASHER, FLYWHEEL NUT	5	4
	SCREW	11	8	12-20192	WASHER, CHOKE ROD		
12-20028	WASHER, COVER SCREW	9	-		SPRING SCREW	27	11
12-20028	WASHER, CRANKCASE			12-20192	WASHER, THROTTLE PICK-		
	STUD	31	38		UP BRACKET SCREW	27	17
12-20028	WASHER, CRANKCASE			12-20214	WASHER, THUMB SCREW	39	16
	STUD	31	38	12-20260	WASHER, FIBRE-GREASE		
12-20028	WASHER, CRANKCASE TO				FILLER HOLE	43	31
	CYLINDER BLOCK STUD	33	26	12-20262	WASHER, FIBRE-GEAR CASE		
12-20028	WASHER, CYLINDER BLOCK				VENT SCREW	43	29
	COVER MOUNTING			12-20684	WASHER,, RUBBER-WATER		
	SCREW	33	7		TUBE SEALING	41	37
12-20028	WASHER, FUEL FILTER			12-21464	WASHER, RUBBER - FILTER		
	ATTACHING SCREW	19	-		ELEMENT	19	-
12-20028	WASHER, FUEL PUMP			12-21840	WASHER, THRUST -		
	MOUNTING STUD	23	-		TACHOMETER DRIVE		
12-20028	WASHER, INTAKE COVER				SHAFT	13	-
	MOUNTING SCREW	7	20	12-21904	WASHER, WATER TUBE	41	38
12-20028	WASHER, LEVER ANCHOR			12-22545	WASHER, GROUND SCREW	15	14
	SCREW	39	20	12-22547	WASHER, ROTOR SHAFT -		
12-20028	WASHER, MANIFOLD				INNER SEAL (DRIVE END)	15	-
	COVER MOUNTING			12-22549	WASHER, INSULATING -		
	SCREW & STUD	7	9		BEARING (DRIVE END)	15	-
12-20028	WASHER, PLATE			12-22550	WASHER, INSULATING -		
	ATTACHING SCREW	29	--		BEARING SUPPORT	15	-
12-20028	WASHER, STARTER COVER			12-22558	WASHER, CONTACT		
	SCREW	3	--		SUPPORT LOCKING		
12-20028	WASHER, TILT STOP LVERE				SCREW	15	-
	RETAINING SCREW	41	31	12-22559	WASHER, INSULATING -		
12-20028	WASHER, TORSION SPRING				GROUND SCREW	15	13
	MOUNTING SCREW	11	11	12-22560	WASHER, VENT SCREEN		
12-20028	WASHER, TRANSFER PORT				FASTENING	15	-
	COVER SCREW	29	5	12-22562	WASHER, ROTOR BEARING		
12-20064	WASHER, NEEDLE				SEAL (DRIVE END)	15	-
	LOCATING	37	21	12-22563	WASHER, ROTOR BEARING		
12-20084	WASHER, END CAP				SEAL (OPPOSITE DRIVE		
	MOUNTING STUD	31	35		END)	15	-
12-20084	WASHER, END CAP			12-24540	THRUST WASHER,		
	MOUNTING STUD	33	25		PROPELLER SHAFT	43	17
12-20084	WASHER, END CAP			12-24548	WASHER, WATER PUMP		
	MOUNTING STUD	33	25		HOUSING	43	21
12-20084	WASHER, POWERHEAD TO			12-24664	WASHER, FRONT COWL		
	DRIVE SHAFT HOUSING				MOUNTING STUD	9	24
	STUD	41	40	12-24673	WASHER, FLYWHEEL	5	9
12-20084	WASHER, SSWIVEL			12-26014	WASHER, REED STOP		
	BRACKET SUPPORT				MOUNTING SCREW	37	10
	STUD	41	--	13-20040	LOCKWASHER, MAGNETO		
12-20084	WASHER, TACHOMETER				ACTUATING BRACKET	11	-
	DRIVE SHAFT	11	-				

PARTS INDEX

Part Number	Description	Pg.	Ref. No.	Part Number	Description	Pg.	Ref. No.
13-20040	LOCKWASHER, MAGNETO SHAFT SCREW	11	-	13-24674	WAVE WASHER, TIMING PULLEY END PLAY	35	35
13-20040	LOCKWASHER, PRESSURE VALVE COVER SCREW . . .	31	26	14-20091	TAB WASHER, MAIN BEARING LOCKING SCREWS	31	42
13-20147	LOCKWASHER, AUXILIARY PLATE SCREW	5	-	14-20165	TAB WASHER, SHEAVE SHAFT NUT	3	13
13-20147	LOCKWASHER, CLAMP PLATE MOUNTING SCREW	39	12	14-20306	TAB WASHER, DRIVE SHAFT HOUSING STUD . . .	43	35
13-20147	LOCKWASHER, EXHAUST MANIFOLD COVER STUD	7	6	14-20306	TAB WASHER, DRIVE SHAFT HOUSING TO GEAR HOUSING STUD . .	41	41
13-20147	LOCKWASHER, INTAKE COVER MOUNTING SCREW	7	21	14-20871	TAB WASHER, DRIVE SHAFT PINION GEAR . . .	43	10
13-20147	LOCKWASHER, INTAKE COVER STUD	7	17	15-20082	SHIM, UPPER END CAP TO CRANKCASE	33	23
13-20147	LOCKWASHER, LOCKING PLATE SCREW	5	8	15-20085	SHIM, END CAP TO CRANKCASE	31	33
13-20147	LOCKWASHER, MANIFOLD COVER MOUNTING SCREW	7	10	15-20219	SHIM, CLAMP BRACKET TO SWIVEL BRACKET	39	24
13-20147	LOCKWASHER, STARTER COVER SCREW	3	21	15-20929	SHIM, DRIVE SHAFT BALL BRG.(.002-3-5-10)	43	6
13-20147	LOCKWASHER, UPPER CLAMP BRACKET SCREW	39	--	15-21756	SHIM, UPPER END CAP TO CRANKCASE	33	23
13-20160	WAVE WASHER	3	8	15-22554	SHIM, ROTOR SHAFT SEAL (DRIVE END)	15	-
13-20163	WAVE WASHER, STARTER PAWL	3	11	15-24370	SHIM, CLAMP BRACKET TO SWIVEL BRACKET	39	--
13-20193	LOCKWASHER, THROTTLE PICK-UP BRACKET SCREW	27	18	15-24536	SHIM, PROPELLER SHAFT BEARING (.002)	43	16
13-20223	LOCKWASHER, CLAMP BRACKET STUD	41	28	15-24537	SHIMN, PROPELLER SHAFT BALL BEARING (.003) . . .	43	16
13-20223	LOCKWASHER, STEERING ARM MOUNTING SCREW	35	34	15-24538	SHIMN, PROPELLER SHAFT BALL BEARING (.005) . . .	43	16
13-20494	LOCKWASHER, FUEL FILTER TOP	19	3	15-24539	SHIMN, PROPELLER SHAFT BALL BEARING (.010) . . .	43	16
13-20758	LOCKWASHER, LOWER CLAMP BRACKET SCREW	39	--	15-24542	SHIM, PROPELLER SHAFT BEARING (.032)	43	19
13-20924	LOCKWASHER, LEVER ANCHOR SCREW	39	21	15-24543	SHIM, PROPELLER SHAFT BEARING (.002)	43	20
13-20924	LOCKWASHER, TILT STOP LEVER RETAINING SCREW	41	32	15-24544	SHIM, PROPELLER SHAFT BEARING (.003)	43	20
13-21849	LOCKWASHER, FLYWHEEL NUT	5	-	15-24545	SHIM, PROPELLER SHAFT BEARING (.005)	43	20
13-22542	LOCKWASHER, CONTACT SUPPORT SCREW	17	-	15-24546	SHIM, PROPELLER SHAFT BEARING (.010)	43	20
13-22543	LOCKWASHER, CONTACT SUPPORT LOCKING SCREW	17	-	16-20074	STUD, CARBURETOR MOUNTING	29	28
13-22543	LOCKWASHER, GROUND SCREW	15	15	16-20074	STUD, CYLINDER BLOCK TO CRANKCASE	29	13
13-23398	LOCKWASHER, COVER PLATE SCREW	23	-	16-20074	STUD, INTAKE COVER	7	15
13-23399	LOCKWASHER, COVER SCREW	23	-	16-20075	STUD, CRANKCASE TO CYLINDER BLOCK	33	15
13-23400	LOCKWASHER, VALVE RETAINER SCREW	23	-	16-20075	STUD, CYLINDER BLOCK TO CRANKCASE	29	14
13-24674	WAVE WASHER	5	10	16-20076	STUD, CRANKCASE TO CYLINDER BLOCK	33	16

PARTS INDEX

Part Number	Description	Pg.	Ref. No.	Part Number	Description	Pg.	Ref. No.
16-20078	STUB, CRANKCASE TO UPPER END CAP	33	8	17-20050	DOWEL PIN , MAIN BEARING REED LOCATING	37	-
16-20078	STUB, CRANKCASE TO UPPER END CAP	33	8	17-20182	PIN, GROOVE - IDLE ADJUSTMENT SCREW . .	25	32
16-20078	STUD, CYLINDER BLOCK & CRANKCASE TO END CAP	29	6	17-20225	PIN, TILT LOCK	41	34
16-20218	STUD, CLAMP BRACKET TO SWIVEL BRACKET	39	23	17-20230	PIN, SWIVEL	41	36
16-20221	STUD, CLAMP BRACKET . .	39	26	17-20323	DOWEL PIN, CENTER MAIN BEARING	37	-
16-20221A1	TILT LOCK STUD ASSEMBLY	39	--	17-20392	DOWEL PIN, MAIN BEARING	37	-
16-20352	STUD, CYLINDER BLOCK TO CRANKCASE	29	8	17-20648	PIN, CHOKE ROD TO CHOKE LEVER	27	8
16-20352	STUD, CYLINDER BLOCK TO CRANKCASE	29	8	17-20853	PIN, FLOAT LEVER	25	9
16-20353	STUD, CYLINDER BLOCK TO CRANKCASE	29	11	17-21829	PIN, CRANKSHAFT GEAR DRIVING	13	-
16-20353	STUD, CYLINDER BLOCK TO CRANKCASE	29	11	17-21829	PIN, DRIVE GEAR TO DRIVE SHAFT	11	-
16-20354	STUD, CYLINDER BLOCK TO CRANKCASE	29	9	17-21867	PIN, MAGNETO DRIVE GEAR	13	-
16-20355	STUD, CYLINDER BLOCK TO CRANKCASE	29	10	17-21867	PIN, DRIVE GEAR TO DRIVE SHAFT	11	-
16-20484	STUD, CYLINDER BLOCK TO CRANKCASE	29	14	17-23153	DOWEL PIN, MAIN BEARING LOCATING	31	--
16-21015	STUD, POWERHEAD TO DRIVE SHAFT HOUSING .	29	7	17-23401	PIN, ROCKER ARM	23	19
16-21184	STUD, CYLINDER BLOCK TO CRANKCASE	29	12	17-23991	PIN, TILT LOCK	41	34
16-21831	STUD, CYLINDER BLOCK TO TIMING CASE COVER . . .	33	9	17-24534	PIN, PROPELLER GEAR DRIVING	43	14
16-21832	STUD, STEERING HANDLE BRACKET	29	--	17-24567	SHEAR PIN	45	37
16-21856	STUD, FUEL PUMP MOUNTING	9	-	18-20180	COTTER PIN, CHOKE LEVER RETAINING	27	6
16-21856	STUD, FUEL PUMP MOUNTING	29	--	18-21069	COTTER PIN, COVER MOUNTING SCREW	7	13
16-21857	STUD, EXHAUST MANIFLD COVER MOUNTING	7	5	18-22534	PIN, FULCRUM (SNAP RING)	17	27
16-21857	STUD, INTAKE COVER	7	15	19-20011	PLUG, WELCH - BODY CHANNEL	25	15
16-21864	STUD, STEERING HANDLE BRACKET	29	--	19-21846	WELCH PLUG (NOT USED IN KG9-1-S)	9	-
16-23107	STUD INSTRUMENT PANEL BRACKET MOUNTING . . .	33	18	21-24687	CHECK VALVE, FUEL PUMP OUTLET	23	-
16-23150	STUD, MANIFOLD COVER MOUNTING	7	-	22-20025	PLUG, PIPE-CYLINDER BLOCK COVER	33	3
16-23155	STUD, SHOULDER-SPARK PLUG COVER MOUNTING	33	4	22-20194	ELBOW, CARBURETOR FUEL INTAKE	27	19
16-24343	STUD, DRIVE SHAFT HOUSING TO GEAR HOUSING	39	6	22-20194	ELBOW, FILTER TO FUEL LINE	19	12
16-24379	STUD, SWIVEL BRACKET SUPPORT	39	--	22-20194	ELBOW, FILTER TO FUEL LINE	19	12
16-24379A1	TILT LOCK STUD ASSEMBLY	39	--	22-21280	ELBOW, FUEL PUMP OUTLET	23	-
16-24553	STUD, DRIVE SHAFT HOUSING TO GEAR HOUSING	43	32	22-21290	PIPE PLUG, GEAR CASE COVER	9	-
17-20032	DOWEL PIN, MAIN BEARING LOCATING	31	--	22-21685	SLEEVE, COMPRESSION - FUEL LINE	21	14
17-20033	DOWEL PIN, CYLINDER BLOCK TO CRANKCASE .	29	15	22-21685	SLEEVE, COMPRESSION NUT	27	22
				22-23386	CONNECTOR, FILTER OUTLET	19	-
				22-23386	CONNECTOR, PUMP INLET	21	-
				22-23387	ELBOW, FILTER TO FUEL LINE	19	-
				22-23387	ELBOW, FUEL LINE	23	-

PARTS INDEX

Part Number	Description	Pg.	Ref. No.	Part Number	Description	Pg.	Ref. No.
22-24688	TEE, CARBURETOR FUEL INTAKE	27	-	26-20070	OIL SEAL, MAGNETO ROLLER BEARING	33	14
22-24689	ELBOW, OUTLET	23	-	26-20236	OIL SEAL, TACHOMETER DRIVE SHAFT	11	-
22-24689	ELBOW, VALVE COVER TO HOSE CONNECTOR (MARK 40H ONLY)	29	21	26-20465	OIL SEAL	43	-
22-24693	TEE UNION, FUEL LINE	27	21	26-20465A1	PILOT & OIL SEAL ASSEMBLY	43	7
23-20134	SPACER, MAGNETO TIMING PULLEY	11	12	26-21740	OIL SEAL, UPPER END CAP	33	20
23-20158	SPACER SHEAVE SHAFT	3	6	26-21757	OIL SEAL, LOWER END CAP	31	30
23-20159	BUSHING, SPRING GUIDE	3	7	26-21844	OIL SEAL, GEAR CASE COVER	9	-
23-20196	BUSHING, SWIVEL PIN-LOWER	39	2	26-22564	SEAL, BEARING SUPPORT	15	-
23-20199	BUSHING, SWIVEL PIN-UPPER	39	3	26-24523	SEAL, PROPELLER SHAFT	43	24
23-20216	SPACER, TILT STOP LEVER	39	18	26-25837	OIL SEAL, UPPER END CAP	33	20
23-20222	SPACER, CLAMP BRACKET STUD	39	27	26-25840	OIL SEAL, LOWER END CAP	31	30
23-21309	BUSHING, FUEL LINE	27	-	27-20026	GASKET, CYNLINDER BLOCK COVER	33	5
23-21742	SPACER, BALL BEARING	33	--	27-20030	GASKET, TRANSFER PORT COVER	29	3
23-21827	SPACER, BALL BEARING	31	--	27-20039	GASKET, PRESSURE VALVE COVER	31	25
23-22544	BUSHING, INSULATING - GROUND SCREW	15	-	27-20095	GASKET, CYLINDER BLOCK TO MANIFOLD PLATE	7	1
23-23996	SPACER, MAGNETO ACTUATING BRACKET	11	-	27-20097	GASKET, MANIFOLD PLATE TO COVER	7	3
23-23997	SPACER, MAGNETO GEAR	11	-	27-20183	GASKET, CARBURETOR FLANGE	25	1
23-24568	COLLAR, PROPELLER	45	39	27-20338	GASKET, FILTER ELEMENT	19	10
24-20174	SPRING, CHOKE SHUTTER	27	3	27-20496	GASKET, FILTER TOP	19	5
24-20229	SPRING, CO-PILOT	41	35	27-20558	GASKET SET, MOTOR OVERHAUL (MK40)	1	-
24-20297	SPRING, MAGNETO ASSEMBLY TORSION	11	9	27-20848	GASKET, MAIN ADJUSTMENT SCREW PACKING	25	20
24-20341	SPRING, FILTER ELEMENT RETAINING	19	9	27-20851	GASKET, INLET NEEDLE & SEAT	25	26
24-20649	SPRING, CHOKE ROD POSITIONING	27	9	27-21847	GASKET, GEAR CASE COVER	9	-
24-20856	SPRING, IDLE ADJUSTMENT SCREW	25	29	27-22023	GASKET, CARBURETOR FLANGE	25	1
24-22565	SPRING, ROTOR	17	33	27-22536	GASKET, END CAP COVER	17	34
24-23191	SPRING, THROTTLE RETURN	25	14	27-22551	GASKET, END CAP	17	28
24-23360	SPRING, FILTER ELEMENT RETAINING	19	-	27-23148	GASKET, CYLINDER BLOCK TO MANIFOLD PLATE	7	1
24-23408	SPRING, DIAPHRAGM	23	13	27-23149	GASKET, MANIFOLD PLATE TO COVER	7	3
24-23409	SPRING, ROCKER ARM	23	15	27-23151	GASKET, INTAKE WATER CHAMBER PLATE	29	--
24-23714	SPRING, STARTER REWIND	3	4	27-23159	GASKET, MANIFOLD PLATE TO COVER	7	3
25-20034	"O" RING, WATER INLET TUBE SEALING	29	16	27-23160	GASKET, CYLINDER BLOCK TO MANIFOLD PLATE	7	1
25-20081	"O" RING, LOWER END CAP	31	32	27-23356	GASKET, FUEL PUMP	23	-
25-20081	"O" RING, UPPER END CAP	33	22	27-23359	GASKET, FILTER TOP	19	-
25-20116	GROMMET, CHOKE ROD	27	24	27-23362	GASKET, FILTER ELEMENT	19	-
25-20116	GROMMET, HIGH TENSION LEAD	13	21	27-23396	GASKET, VALVE RETAINER	23	7
25-20195	"O"RING, WATER INLET TUBE	39	5	27-23444	GASKET, FILTER TOP	19	-
25-21836	"O" RING, ASSMEBLY DRIVE SHAFT	11	-	27-24110	GASKET SET, MOTOR OVERHAUL (KG9 & KG9-1)	1	-
25-24547	RING,SEALING-WATER PUMP HOUSING	43	22				
26-20068	3OIL SEAL,MAGNETO SHAFT BEARING	33	12				

PARTS INDEX

Part Number	Description	Pg.	Ref. No.	Part Number	Description	Pg.	Ref. No.
28-20094	KEY, PULLEY DRIVING	35	30	32-23492	FUEL LINE, TEE UNION TO		
28-20137	KEY, MAGNETO DRIVING . .	11	15		CARBURETOR	27	20
28-20141	KEY, FLYWHEEL DRIVE . . .	5	2	32-24345	TUBE, WATER INLET	39	4
28-20946	KEY, IMPELLER DRIVE	43	26	33-20127	SPARK PLUG	13	24
28-23999	KEY, MAGNETO GEAR			33-22805	SPARK PLUG	13	24
	DRIVING	11	-	34-20035	REED, FUEL PRESSURE		
29-20046	BEARING, NEEDLE	37	5		VALVE	29	17
29-20046	BEARINGM NEEDLE-			34-20036	STOP, FUEL PRESSURE		
	CRANKPIN	37	19		VALVE REED	29	18
29-20063	BEARING, NEEDLE-PISTON			34-20053	REED STOP, MAIN		
	PIN	37	20		BEARING REED VALVE . .	37	9
30-20066	BEARING, BALL-MAGNETO			34-20888	REED SET, MAIN BEARING		
	SHAFT	33	10		VALVE	37	8
30-20080	BEARING, BAL;L-			35-20555	ELEMENT, FUEL FILTER . .	19	6
	PROPELLER SHAFT	43	15	35-20555A2	FUEL FILTER ASSEMBLY . .	19	-
30-20080	BEARING, BALL - LOWER			35-22561	SCREENN VENT	15	-
	END CAP	31	31	35-23342	ELEMENT, FUEL FILTER . .	19	-
30-20080	BEARING, BALL-UPPER END			35-23440	FUEL FILTER ASSEMBLY . .	19	-
	CAP	33	21	35-23445	ELEMENT, FUEL FILTER . .	19	-
30-20824	BEARING, BALL - LOWER			38-23378	SERIAL PLATE	9	-
	END CAP	31	--	38-23416	SERIAL PLATE	9	-
30-20861	BEARING, BALL-DRIVE			38-23425	SERIAL PLATE	9	25
	SHAFT	43	5	39-20058	RING, PISTON	37	15
30-21741	BEARING, BALL-UPPER END			39-20992	RINGS, PISTON (.015		
	CAP	33	21		OVERSIZED)	37	--
30-21830	BEARING, BALL-MAGNETO			40-20057	LOCK RING, PISTON PIN . .	37	14
	SHAFT	33	10	43-21828	GEAR, CRANKSHAFT	13	-
30-21833	BEARING, BALL - GEAR			43-21838	GEAR, TACHOMETER DRIVE	11	-
	CASE COVER	9	-	43-21850	GEAR, MAGNETO DRIVE		
30-21833	BEARING, BALL-MAGNETO				IDLER	13	-
	IDLER GEAR	33	--	43-23572	GEAR, CRANKSHAFT	13	-
30-21863	BEARING, BALL - GEAR			43-23573	GEAR, MAGNETO DRIVE		
	CASE COVER	9	-		IDLER	13	-
30-22556	BEARING, BALL - ROTOR			43-23574	GEAR, TACHOMETER DRIVE	11	-
	(DRIVE END)	15	3	43-23998	GEAR, MAGNETO DRIVE . .	11	-
30-22557	BEARING, BALL - ROTOR			43-24001	GEAR, MAGNETO DRIVE . .	11	-
	(OPPOSITE DRIVE END) .	15	5	43-24531	GEAR, PINION	43	9
31-20069	BEARING, ROLLER-			43-24533	GEAR, PROPELLER SHAFT	43	13
	MAGNETO SHAFT LOWER	33	13	44-24532	SHAFT, PROPELLER	43	12
31-21146	BEARING, ROLLER-			45-24516	DRIVE SHAFT	43	4
	PROPELLER SHAFT	43	3	46-24549A1	WATER PUMP HOUSING		
31-21835	BEARING, ROLLER -				ASSEMBLY	43	23
	TACHOMETER DRIVE			47-24550	IMPELLER	43	25
	SHAFT	11	-	48-24509	PROPELLER, 2 BLADE -		
31-24515	BEARING, ROLLER-DRIVE				BRONZE (12 1/2" PITCH) .	1	-
	SHAFT	43	2	48-24513	PROPELLER, 2 BLADE -		
32-23115	HOSE, PRESSURE RELIEF				BRONZE (13 1/2" PITCH) .	1	-
	(MARK 40H ONLY)	29	23	48-24520	PROPELLER, 2 BLADE -		
32-23365	FUEL LINE, CARBURETOR				BRONZE (11" PITCH)	1	-
	TO CARBURETOR	27	-	48-24563	PROPELLER, 2 BLADE -		
32-23380	FUEL LINE, HAND PUMP TO				BRONZE (11 1/2" PITCH) .	1	-
	FUEL PUMP	23	-	48-24566	PROPELLER	45	36
32-23429	FUEL LINE REPLACEMENT			50-20149	STARTER SHEAVE		
	KIT, INLET TO FILTER . . .	19	-		ASSEMBLY	3	2
32-23430	FUEL LINE ASSEMBLY,			50-22791A1	STARTER CABLE		
	FILTER TO PUMP	21	-		ASSEMBLY	3	15
32-23441	FUEL LINE ASSEMBLY,			53-20067	SNAP RING, NAGNETO		
	FILTER TO PUMP	21	-		SHAFT BEARING	33	11
32-23492	FUEL LINE, FILTER TOP TO			53-21837	RING, SNAP - TACHOMETER		
	TEE UNION	19	13		DRIVE SHAFT	11	-

PARTS INDEX

Part Number	Description	Pg.	Ref. No.	Part Number	Description	Pg.	Ref. No.
53-24541	SNAP RING, PROPELLER SHAFT	43	18	501-53	MAIN BEARING ASSEMBLY (VALVE TYPE)	37	6
91-20065	INSERT, HELICOIL-SPARK PLUG ROLE	33	--	514-485A1	CENTER MAIN BEARING ASSEMBLY	37	3
122-501	COWL, FRONT	7	22	600-7A1	CONNECTING ROD & CAP ASSEMBLY	37	16
123-510	COWL, FRONT (USED ONLY WITH REWIND STARTER)	7	-	714-497A1	PISTON & PISTON PIN ASSEMBLY (.015 OVERSIZED)	37	--
124-513	COWL, FRONT	7	22	718-1193A2	PISTON, PISTON PIN & RING ASSEMBLY	37	--
141-766A1	STARTER HOUSING ASSEMBLY	3	1	812-833A1	CYLINDER BLOCK & CRANKCASE ASSEMBLY	29	1
144-769A1	STARTER HOUSING ASSEMBLY	3	1	812-833A1	CYLINDER BLOCK & CRANKCASE ASSEMBLY	33	1
144-769A2	STARTER ASSEMBLY, COMPLETE	3	-	812-833A1	CYLINDER BLOCK & CRANKCASE ASSEMBLY	33	1
202-297	FLYWHEEL	5	-	814-944A1	CYLINDER BLOCK & CRANKCASE ASSEMBLY	29	1
205-474	FLYWHEEL	5	1	814-944A1'	CYLINDER BLOCK & CRANKCASE ASSEMBLY	33	1
304-372	MAGNETO ASSEMBLY, COMPLETE	11	1	816-512A1	CYLINDER BLOCK & CRANKCASE ASSEMBLY	29	1
304-372	MAGNETO ASSEMBLY, COMPLETE	15	-	916-512A1	CYLINDER BLOCK & CRANKCASE ASSEMBLY	33	1
325-1023	MAGNETO ASSEMBLY, COMPLETE	11	1	1007-508A1	CYLINDER BLOCK COVER ASSEMBLY	33	2
325-1023	MAGNETO ASSEMBLY, COMPLETE	15	-	1100-17A1	UPPER END CAP ASSEMBLY	33	19
397-351	COVER, END CAP	17	37	1101-18A1	LOWER END CAP ASSEMBLY	31	29
397-352A1	BREAKER ASSEMBLY, COMPLETE	15	23	1112-276	END CAP, UPPER	33	--
397-355	CAM WICK & HOLDER	15	22	1112-276A1	UPPER END CAP ASSEMBLY	33	19
397-356	ROD, DISTRIBUTOR HIGH TENSION LEAD	17	36	1113-277	END CAP, LOWER	31	--
397-357	FRAME	15	1	1113-277A1	LOWER END CAP ASSEMBLY	31	29
397-358	END CAP	17	29	1316-590	CARBURETOR ASSEMBLY (TILLOTSON AJ-31A)	25	5
397-360	BRUSH & SPRING, COIL LEAD	17	35	1316-590	CARBURETOR ASSEMBLY, COMPLETE	27	1
397-361	COIL	15	-	1319-596	CARBURETOR ASSEMBLY (TILLOTSON AJ-33A)	25	5
397-363	WIRE, PRIMARY TERMINAL	15	-	1399-101	CARBURETOR ASSEMBLY, COMPLETE	27	1
397-364	PRIMARY GROUND TERMINAL GROUP	15	-	1399-102	LEVER, FLOAT (UPPER)	25	8
397-367	STRIP, BEARING INSULATING (DRIVE END)	15	-	1399-107	LEVER, FLOAT (LOWER)	25	7
397-368	INSULATOR, BEARING SUPPORT	15	-	1399-107	SHUTTER, THROTTLE	25	24
397-369	SEAL, ROTOR SHAFT (DRIVE END)	15	2	1399-108	PACKING, MAIN ADJUSTING SCREW	25	18
397-370	SUPPORT, BEARING	15	6	1399-215	SCREEN, INLET - FLOAT BOWL COVER	25	11
397-371	INSULATOR, PRIMARY GROUND TERMINAL	15	12	1399-216	SHAFT, THROTTLE SHUTTER	25	25
397-381	MAGNETIC ROTOR & SHAFT, COMPLETE	15	4	1399-217	COVER, FLOAT BOWL	25	10
397-743	COVER, END CAP	17	37	1399-572	TUBE, BY-PASS	25	28
397-744	MAGNETIC ROTOR & SHAFT, COMPLETE	15	4	1399-573	SHUTTER, CHOKE	27	2
397-874	CONDENSER	15	20	1399-587	GASKET & PACKING SET	25	--
397-898	ROTOR, DISTRIBUTOR	17	32	1399-587	GASKET AND PACKING SET, CARBURETOR (AJ-31A & AJ-33A)	1	-
397-908	WASHER, ROTOR SHAFT - OUTER SEAL (DRIVE END)	15	-	1399-593	INLET NEEDLE & SEAT	25	27
397-909	WIRE, PRIMARY GROUND	15	11				
400-274	CRANKSHAFT	37	1				
400-482	CRANKSHAFT	37	1				

PARTS INDEX

Part Number	Description	Pg.	Ref. No.	Part Number	Description	Pg.	Ref. No.
1399-594	REPAIR PARTS KIT (AJ-31A)	25	--				
1399-594	REPAIR PARTS KIT, CARBURETOR (AJ-31A)	1	-				
1399-601	REPAIR PARTS KIT (AJ-33A)	25	--				
1399-601	REPAIR PARTS KIT, CARBURETOR (AJ-33A)	1	-				
1399-602	CARBURETOR IDLE ADJUSTMENT SCREW	25	--				
1399-603	FLOAT	25	6				
1399-94	GLAND, MAIN ADJUSTMENT SCREW	25	16				
1399-95	LEAD SHOT, CHANNEL PLUG	25	--				
1399-96	TUBE, BY-PASS	25	28				
1399-97	LEVER, THROTTLE STOP	25	13				
1399-99	GASKET, FLOAT BOWL COVER	25	12				
1400-150A1	CLAMP BRACKET ASSEMBLY	39	14				
1400-859A1	CLAMP BRACKET ASSEMBLY	39	14				
1412-697	SWIVEL BRACKET	39	7				
1423-794	SWIVEL BRACKET	39	-				
1426-797A1	CLAMP BRACKET ASSEMBLY	39	--				
1519-788A1	DRIVE SHAFT HOUSING ASSEMBLY	39	1				
1610-805A1	GEAR HOUSING ASSEMBLY	43	1				
1610-805A2	GEAR HOUSING ASSEMBLY, COMPLETE	43	-				