

Circulate to:  Sales Manager  Accounting  Service Manager  Technician  Parts Manager

## Small Block V8 Oil Pan Gasket and Rear Main Seal Oil Leak

### Scope

Worldwide

### Models Affected

Models Covered	Serial Number
5.0L Sterndrive	1A608864–1A658879
350 MAG Sterndrive	1A619042–1A658680
377 MAG Sterndrive	1A615026–1A658555
5.7L Horizon MIE	1A091381–1A093135
6.2L Horizon MIE	1A092679–1A093162
5.7L Tow Sports	1A092739–1A093154
350 Scorpion Tow Sports	1A092710–1A093144
377 Scorpion Tow Sports	1A092733–1A093100

### Situation

A small number of engines in the serial ranges listed above may experience an oil leak from the rear main seal area of the engine. This oil leak, if it occurs, will be a minor leak and will not cause engine damage from lack of lubrication. The oil from the leak will be present in the area of the bilge directly below the bell housing.

The oil leak is caused by the oil pan gasket not installed correctly. The oil pan gasket can distort the rear main seal carrier, causing the leak to occur from the gasket area and/or the rear main seal.

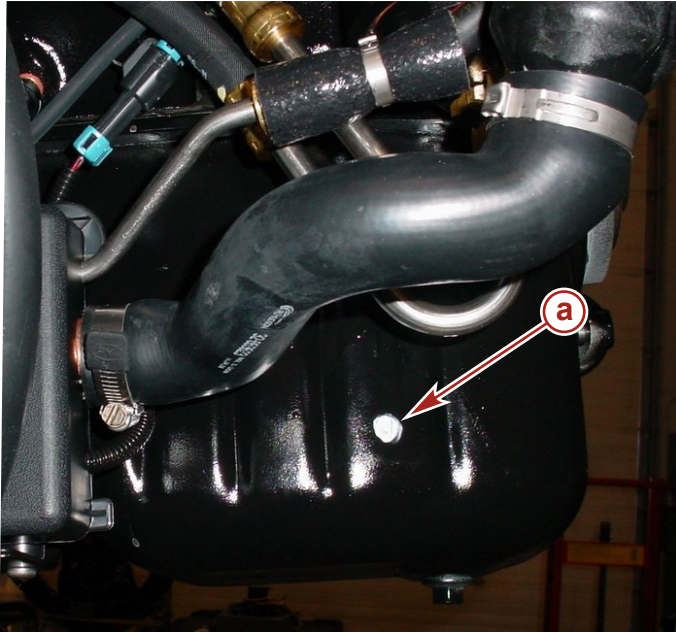
If an oil leak is observed in the area below the bell housing, proceed with the following inspection.

THE INFORMATION IN THIS DOCUMENT IS CONFIDENTIAL AND PROTECTED BY COPYRIGHT AND IS THE PROPERTY OF MERCURY MARINE.

This document is provided for the sole and exclusive use of the original recipient as prescribed by Mercury Marine and may not be distributed or copied, digitally or otherwise, without the prior written consent of Mercury Marine.

## Inspection

Engines may have been repaired at the factory. These engines will be identified with a white paint mark on the port side of the oil pan.

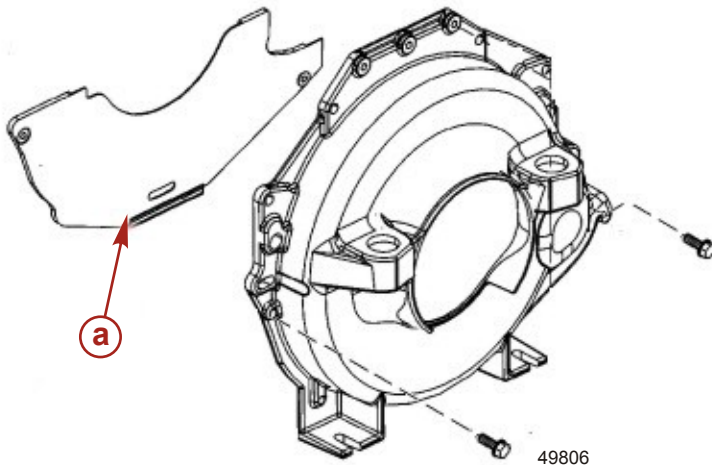


a - Paint mark

49805

## Stern Drive Models

Remove the lower dust shield from the bell housing. There are two 1/4" bolts that hold the dust shield in place.



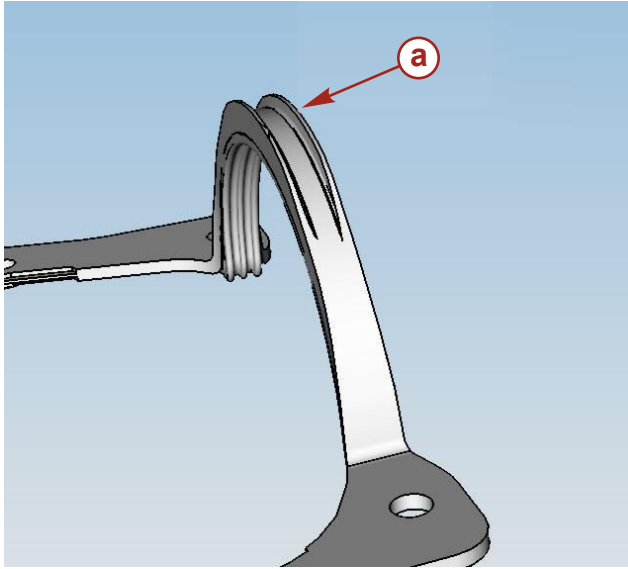
a - Dust shield

49806

THE INFORMATION IN THIS DOCUMENT IS CONFIDENTIAL AND PROTECTED BY COPYRIGHT AND IS THE PROPERTY OF MERCURY MARINE.

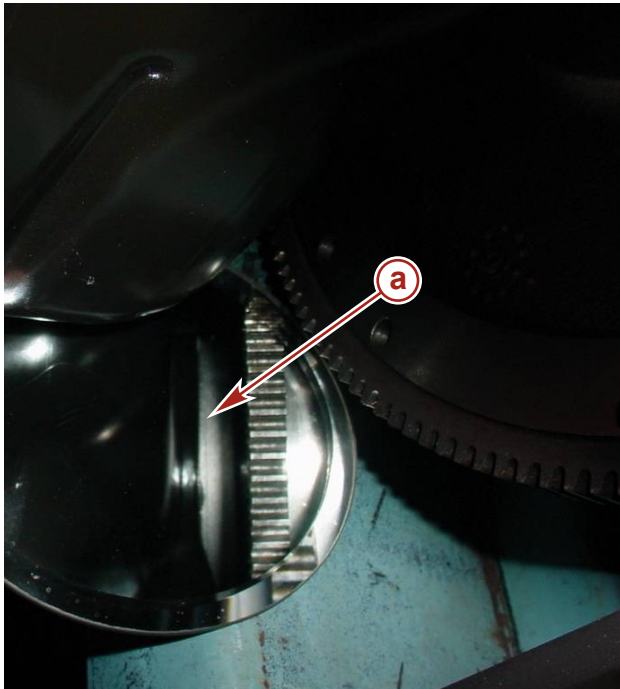
This document is provided for the sole and exclusive use of the original recipient as prescribed by Mercury Marine and may not be distributed or copied, digitally or otherwise, without the prior written consent of Mercury Marine.

Using a suitable viewing device (mirror or bore scope), look from the bottom up at the oil pan interface with the rear main seal carrier. The oil pan gasket is gray in color and has a lip that should be visible behind the oil pan edge. If no gasket material is visible, proceed to the **Correction** section of this bulletin.



a - Gasket lip

49807



a - Gray gasket material is not visible. This gasket is not installed properly.

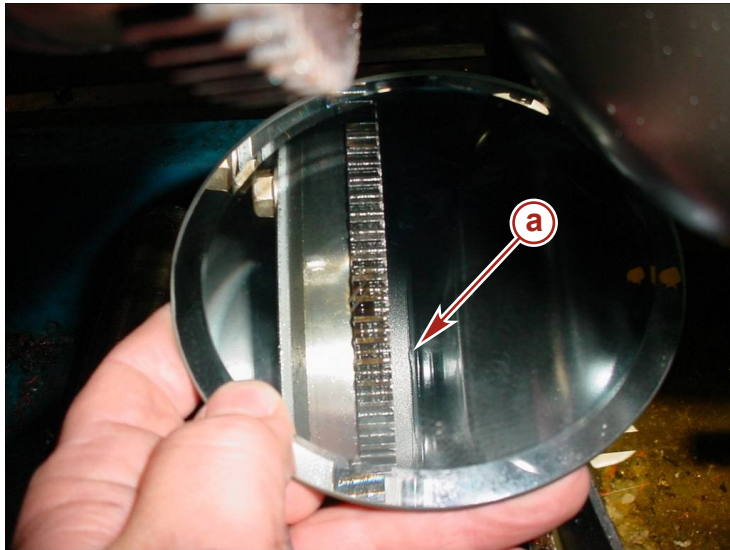
49808

If the gasket material is visible behind the oil pan edge, then the leak needs further diagnosis to determine the root cause. Refer to the appropriate service manual for diagnosis.

THE INFORMATION IN THIS DOCUMENT IS CONFIDENTIAL AND PROTECTED BY COPYRIGHT AND IS THE PROPERTY OF MERCURY MARINE.

This document is provided for the sole and exclusive use of the original recipient as prescribed by Mercury Marine and may not be distributed or copied, digitally or otherwise, without the prior written consent of Mercury Marine.

**NOTE:** The 377 MAG, 6.2L Horizon, and 377 Scorpion models will not be able to be inspected with this method. Verify that the leak is originating from the rear main seal. If the oil leak is originating from the rear main seal area, proceed to the **Correction** section of this bulletin.

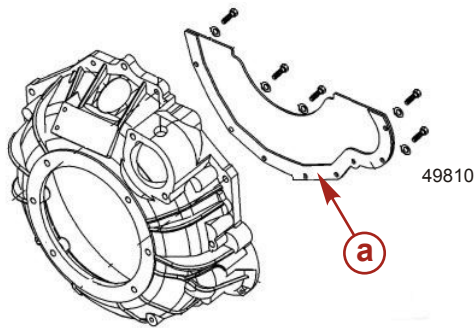


49809

**a** - Gray gasket lip is visible. This is a properly installed gasket.

### Inboard Models

Engine removal may be necessary to remove the dust shield for inspection. There are eight 1/4" bolts that hold the dust shield in place.



**a** - Dust shield

Once the dust shield is removed, refer to the previous inspection method outlined in the sterndrive inspection.

### Correction

The oil pan gasket and rear main seal carrier will require replacement. Follow the procedure outlined in the appropriate service manual.

After the repairs have been completed, place a white paint mark on the port side of the oil pan. Reference the picture in the **Inspection** section of this bulletin for paint mark location.

### Parts Required

Qty.	Description	Part Number
1	Drive gasket set (sterndrive only)	27-94996Q 2
1	Oil pan gasket	27-13865--1
1	Seal carrier	852940
1	Carrier gasket	27-881715
1	Blue RTV Silicone	90-809825
4.5	4-Cycle Synthetic Oil	92-858055K01

THE INFORMATION IN THIS DOCUMENT IS CONFIDENTIAL AND PROTECTED BY COPYRIGHT AND IS THE PROPERTY OF MERCURY MARINE.

This document is provided for the sole and exclusive use of the original recipient as prescribed by Mercury Marine and may not be distributed or copied, digitally or otherwise, without the prior written consent of Mercury Marine.

## Warranty

**United States and Canada:** Contact the MerCruiser Technical Service department for repair authorization at 920-929-5884. Mercury Marine will credit the dealer for the cost of parts and labor.

Inboard	Sterndrive
MA13—7 hours—R and R	MA11—4 hours—R and R
MM63—2.5 hours—Oil pan R and R	
MM81—0.5 hour—Rear main seal carrier	

- Part code: 416
- Failure code: 00

**Outside the United States and Canada:** Follow instructions issued by your local office or by your distributor.

## Old Parts

- **United States and Canada:** Scrap
- **Outside the United States and Canada:** Follow instructions issued by your local office or by your distributor.

THE INFORMATION IN THIS DOCUMENT IS CONFIDENTIAL AND PROTECTED BY COPYRIGHT AND IS THE PROPERTY OF MERCURY MARINE.

This document is provided for the sole and exclusive use of the original recipient as prescribed by Mercury Marine and may not be distributed or copied, digitally or otherwise, without the prior written consent of Mercury Marine.